

Genie **DISTRIBUTION**

AUDIO CODEC

W H E A T N E T
WIP



Genie Distribution with WheatNet-IP (TLR5200DW)

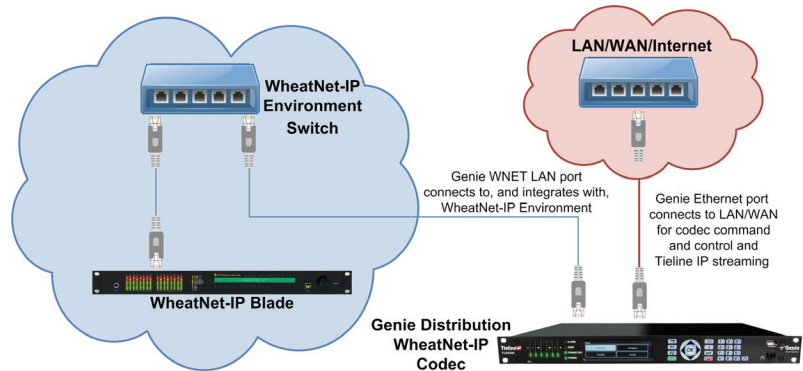
The award winning Genie Distribution codec with WheatNet-IP has a purpose-built rear panel designed to distribute 3 stereo channels or 6 mono channels of WheatNet-IP audio via a WheatNet audio card and LAN port. The codec interfaces with the WheatNet-IP Environment to distribute audio between WheatNet-IP studios over external IP networks like the internet.



Applications

Genie Distribution with WheatNet-IP has dual Gigabit Ethernet ports, dual internal power supplies, audio silence detection and IP network backup solutions to ensure you're always on the air. It is ideal for:

- 3 x bidirectional stereo connections
- 2xstereoand2xmonobidirectionalconnections
- 1 x stereo and 4 x mono bidirectional connections
- 6 x mono bidirectional connections
- 3 x mono bidirectional connections
- Distributing up to 6 channels of high quality audio between two points.
- Stereo IP audio distribution to up to 60 individual multi-unicast endpoints.
- 2,3 or 6 simultaneous to a maximum of 60 endpoints in total.
- IP multicasting to unlimited endpoints over compatible IP networks.
- 2,3 or 6 simultaneous multicasts over compatible IP networks.

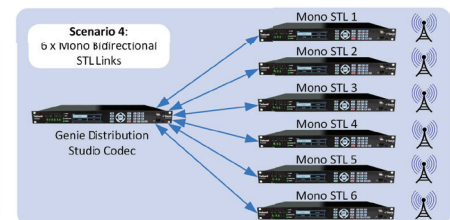
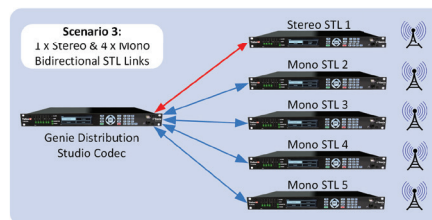
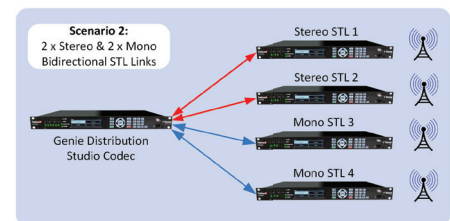
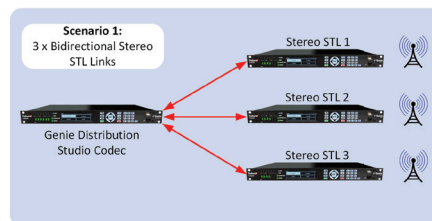


Genie Distribution and WheatNet-IP configuration

Enhanced Output Backup Options

Automatically switch between 4 backup audio sources to maintain program output at transmitter sites. Options include:

- Connection audio.
- Icecast streaming client.
- Audio file backup.
- Hardware bypass of audio inputs to outputs if power fails.



Unsurpassed Clarity

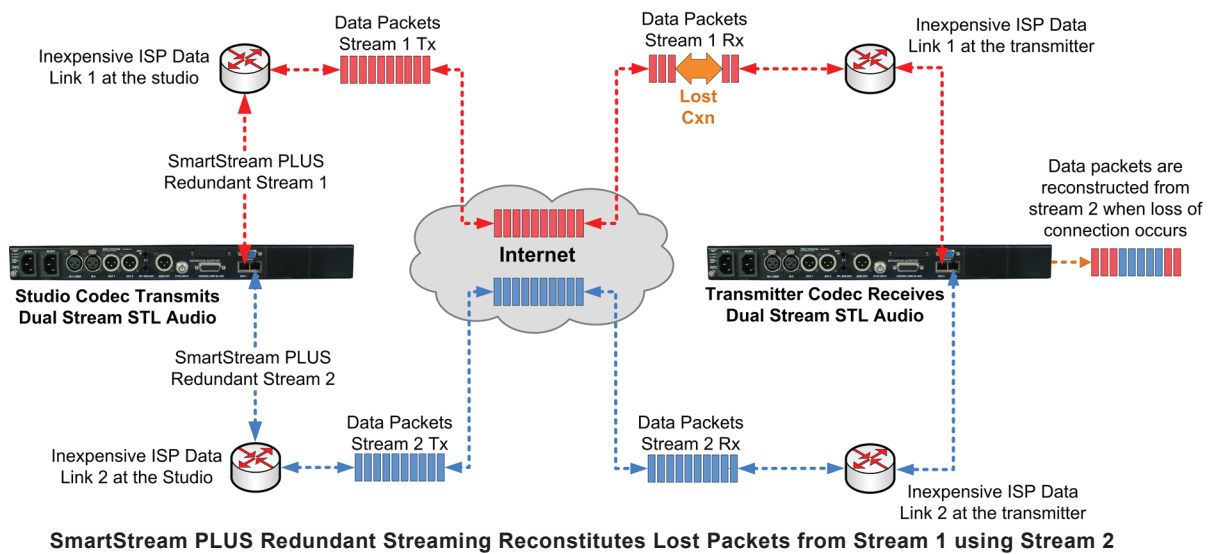
The codec is capable of 24bit 96kHz low latency linear PCM audio for unsurpassed clarity. It also includes the low delay and cascade-resilient aptX® Enhanced algorithm, as well as other popular algorithms including the full AAC suite, Opus, MPEG Layer II, MP3, Teline Music and MusicPLUS, G.722 and G.711.

Fuse-IP and SmartStream PLUS

With Teline's proprietary Fuse-IP data aggregation technology you can bond multiple IP interfaces you choose, including options like:

- USB Wi-Fi Modem and LAN port, or
- Dual Ethernet LAN Ports.





Imagine the peace of mind knowing you can bond 2 links from different Telcos and let Tieline's Fuse-IP technology automatically manage the data capability of each link!

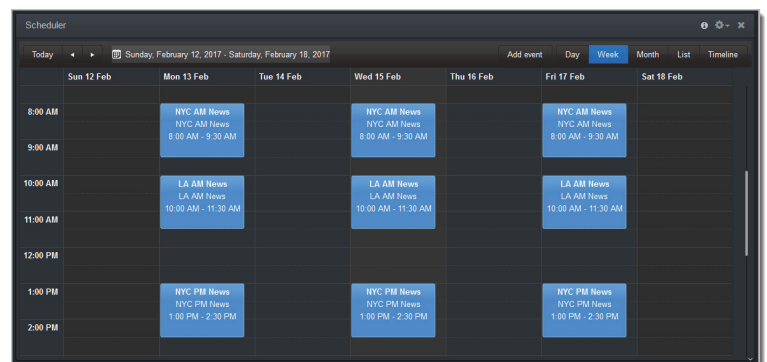
Tieline's SmartStream PLUS dual redundant streaming software has set the benchmark for redundant IP streaming over the public internet. Tieline supports up to 3 redundant streams with each primary audio stream[2]. Some manufacturers charge thousands of dollars for IP management software like SmartStream PLUS as an optional extra, however Tieline believes high performance and rock-solid reliability is an essential part of each and every broadcast, so you get it for FREE!

Nobody likes a traffic jam, least of all broadcasters dealing with IP packet congestion! With Tieline's SmartStream PLUS and Fuse-IP technologies, as well as automated jitter buffer management and error correction strategies, you can be assured of trouble-free motoring on the information superhighway!

Program Scheduler

The Program Scheduler is a powerful tool which automatically connects and disconnects scheduled programs using a simple calendar-based user interface.

- Drag and drop to add programs into the scheduler.
- Drag the top or bottom of a scheduled program to adjust the scheduled time.
- Customization of time-zones.
- Day, week, month, list and timeline views available.
- Enable and disable events in a snap.
- Automatically switch program types from dialing to answering.



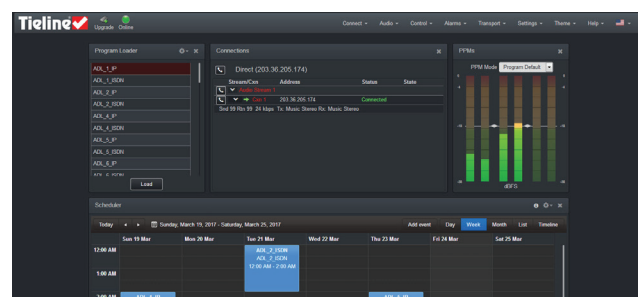
The Web-GUI Program Scheduler

Codec Management

Configure and control all your Tieline codecs from anywhere you can connect to the internet.

- HTML5 ToolBox Web-GUI: Fully configure all codec and connection settings.
- HTML5 ToolBox Quick Connect Web-GUI: Simplified GUI for less technical users. Load existing programs and simple point-to-point dialing.
- Use the Cloud Codec Controller to configure & manage your entire codec network remotely.
- The Tieline Traversal Server centralizes contact list management and provides self discovery of codecs within customized call groups.

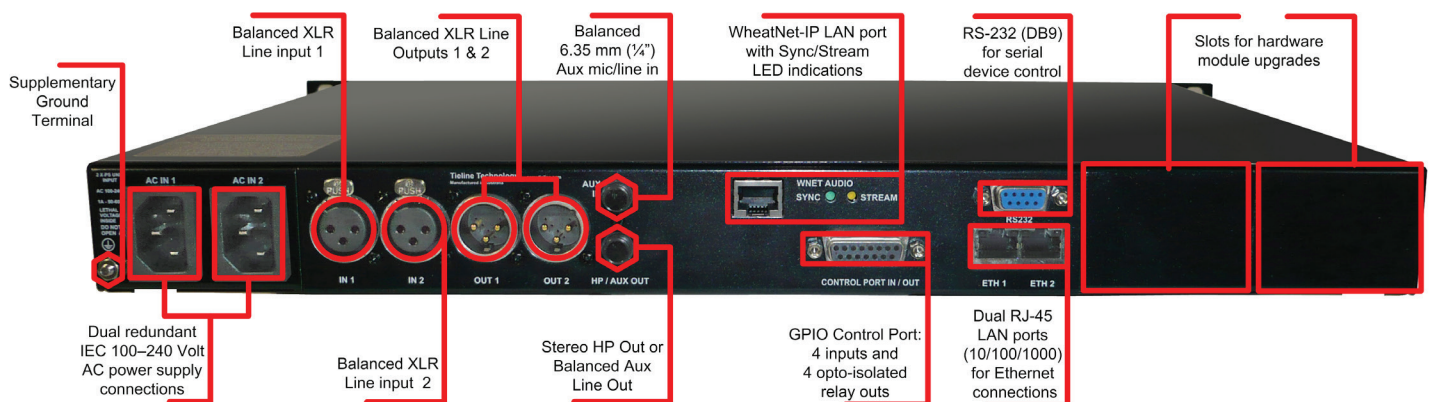
[1]Requires 3rd Party Device [2]Algorithm dependent [3]Additional purchase



The Web-GUI

Input/Output Specifications	
Analog Audio Inputs	2 x Female XLR line inputs
Analog Audio Outputs	2 x Male XLR
Aux Input	1 x 6.35mm (1/4") Mic/Line level Jack on rear panel
Headphones Out/Aux Out	1 x 6.35mm (1/4") Jack on rear panel and 1 x 6.35mm (1/4") Jack on the front panel
WheatNet IP LAN	WheatNet IP card connector
Control Port In/Out	Four relay inputs and four opto-isolated outputs for machine control via a DB15 connector.
Audio Input Impedance	High Impedance > 5K ohm
Output Impedance	<50 ohm Balanced
Clipping Level	+22dBu (input and outputs)
A/D & D/A Converters	24 bit
Frequency Response	20Hz to 22kHz
Total Harmonic Distortion	<0.0035% at +16dBu or -89dBu unweighted
Signal To Noise Ratio	>98.5dB at +22dBu, unweighted
Sample Frequencies	
IP Sample Frequencies	8kHz, 16kHz, 32kHz, 44.1kHz, 48kHz, 96kHz
Algorithms	
IP	Tieline Music, Tieline MusicPLUS, Opus, G.711, G.722, MPEG Layer 2, MPEG Layer-3 LC-AAC, HE-AAC, HE-AACv.2, AAC-LD, AAC-ELD, 16/24 bit aptX® Enhanced algorithm
IP (uncompressed)	Linear PCM16/24 bit 32kHz, 44.1kHz, 48kHz, 96kHz sampling
Data and Control Interfaces	
Web Audio Monitoring	Selectable web audio monitoring of IP audio streams
USB	USB 2.0 Host port on the front panel (support for USB upgrades & Wi-Fi USB Modems)
LAN	2 x 10/100/1000 RJ45 connectors
WheatNet-IP LAN	1 x 10/100 RJ45 connector to distribute WheatNet-IP audio (WheatNet-IP Logic support)
Serial	RS232 up to 115kbps with or without CTS/RTS flow control can be used as a proprietary data channel
Protocols	SIP (EBU N/ACIP 3326 & 3368 compliant), RTP, DHCP, SNMP, DNS, HTTP, IGMP, IPv4/IPv6, RTCP, STUN, SSL Security Certificate, WNNet LIOs, FTP
ISDN	Optional via module slot
Advanced Networking	
VLAN Tagging	IEEE 802.1Q, 802.1p
Front Panel Interfaces	
Display	256 x 64 monochrome LCD
Keypad	21 button keypad
Navigation	5 button keypad
General	
PC Configuration	User-configurable settings via browser-based Toolbox Graphical User Interface
Multilingual	Multilingual menus and configuration software
Size	1U x 19" Rackmount
Dimensions	19" x 1.75" x 13.5" [482mm (W) x 44mm (H) x 343mm (D) including rear connectors]
Weight	6lb 5.6oz/2.88Kg
Power Consumption	Dual AC 100-240V IEC power inlets; 1A 50-60 Hz
Operating Temperature	0°C to 45°C (32°F to 113°F)
Humidity Operating Range	20% ≤ RH ≤ 70% (0 to 35°C/32°F to 95°F), non-condensing.

** Available in later releases



Genie Distribution with WheatNet-IP rear panel

Extensive dealer network with global telephone support in 2 strategic locations around the world

Americas

Tieline America LLC
7202 E. 87th Street, Suite #116,
Indianapolis, IN 46256 USA
Direct Ph: 317-845-8000
Fax: 317-913-6915
E-mail: sales@tieline.com

International

Tieline Pty Ltd
4 Bendsten Place
Balcatta WA 6021 Australia
Ph: +61(0)8 9413 2000
E-mail: info@tieline.com

Tieline®
The Codec Company