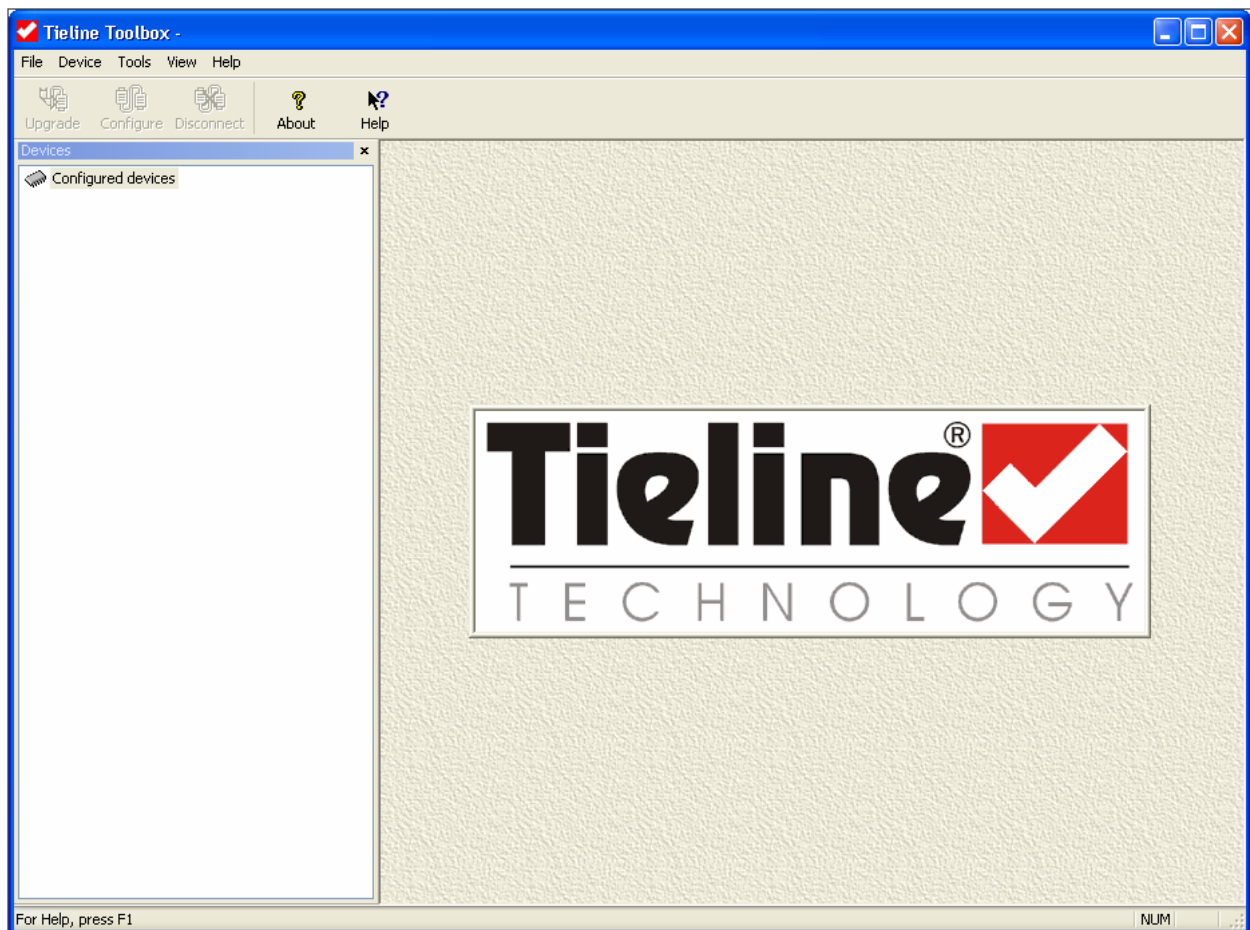




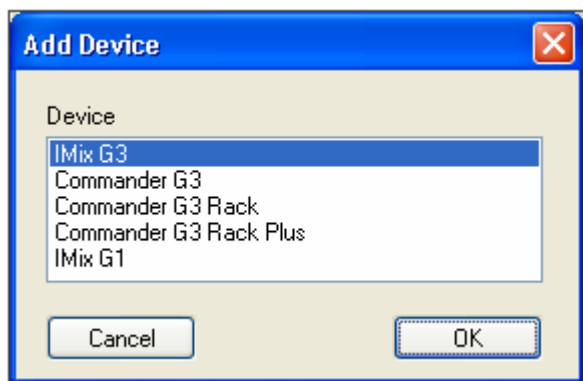
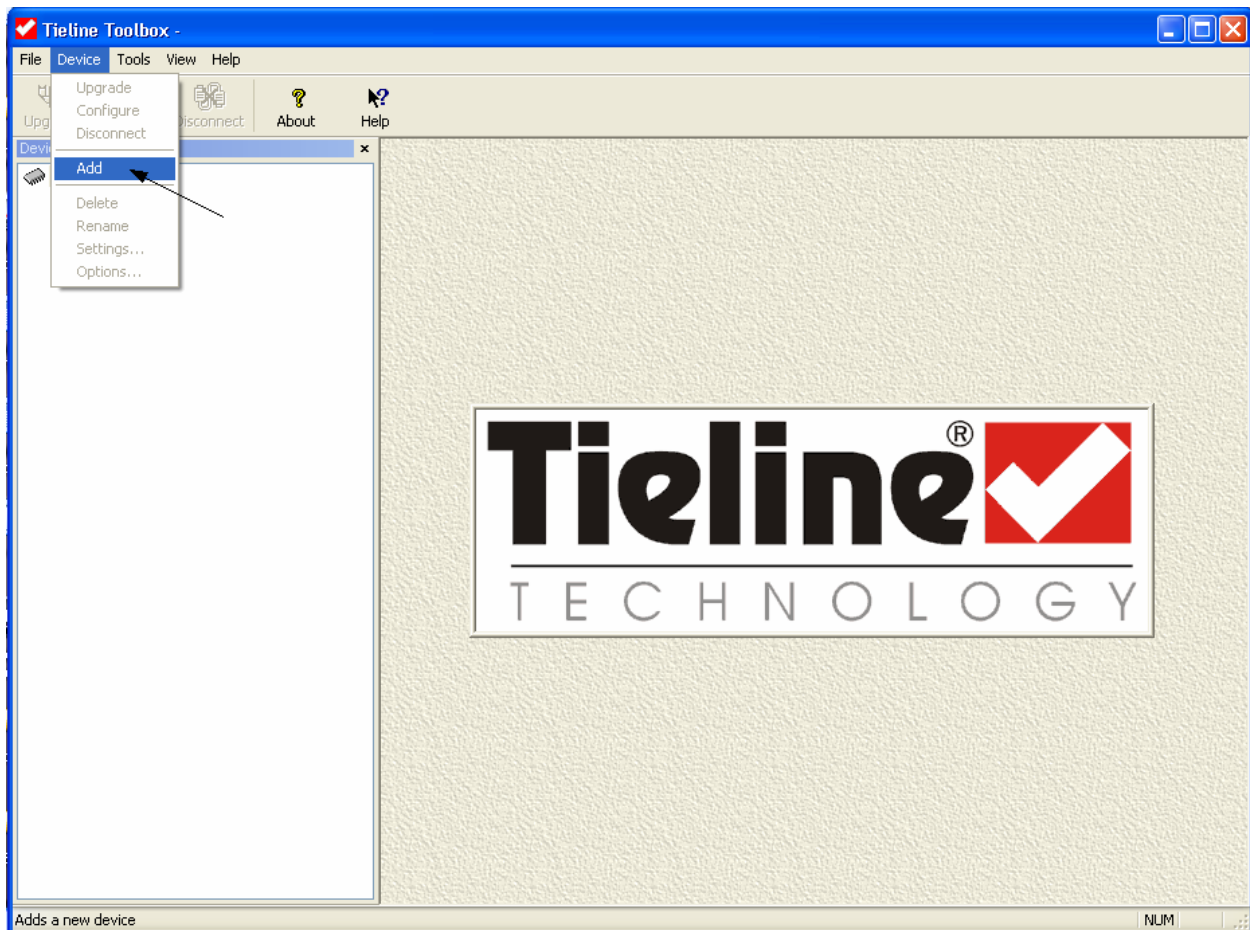
TLM600 Program Outputs for PA Output on CH 2

The PA controls can be activated to provide level control to one or both program outputs for return audio. You must use the ManDlft MonoPgm profile for this to work. This will not work in any other profile including Stereo or Dual Mono.

Connect your computer to the i-Mix G3 using the Tieline Toolbox software. Preferably connect over a LAN. Run the Tieline Toolbox software.



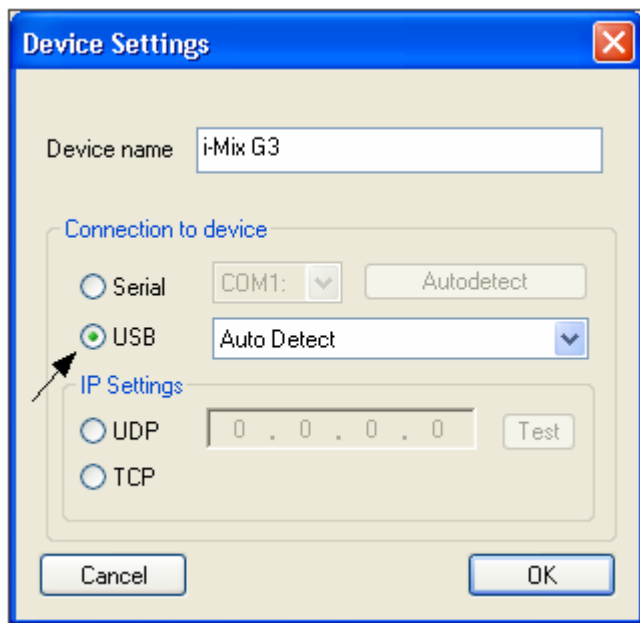
If this is the first time you've ran the Tieline Toolbox software, you will need to add a new device.



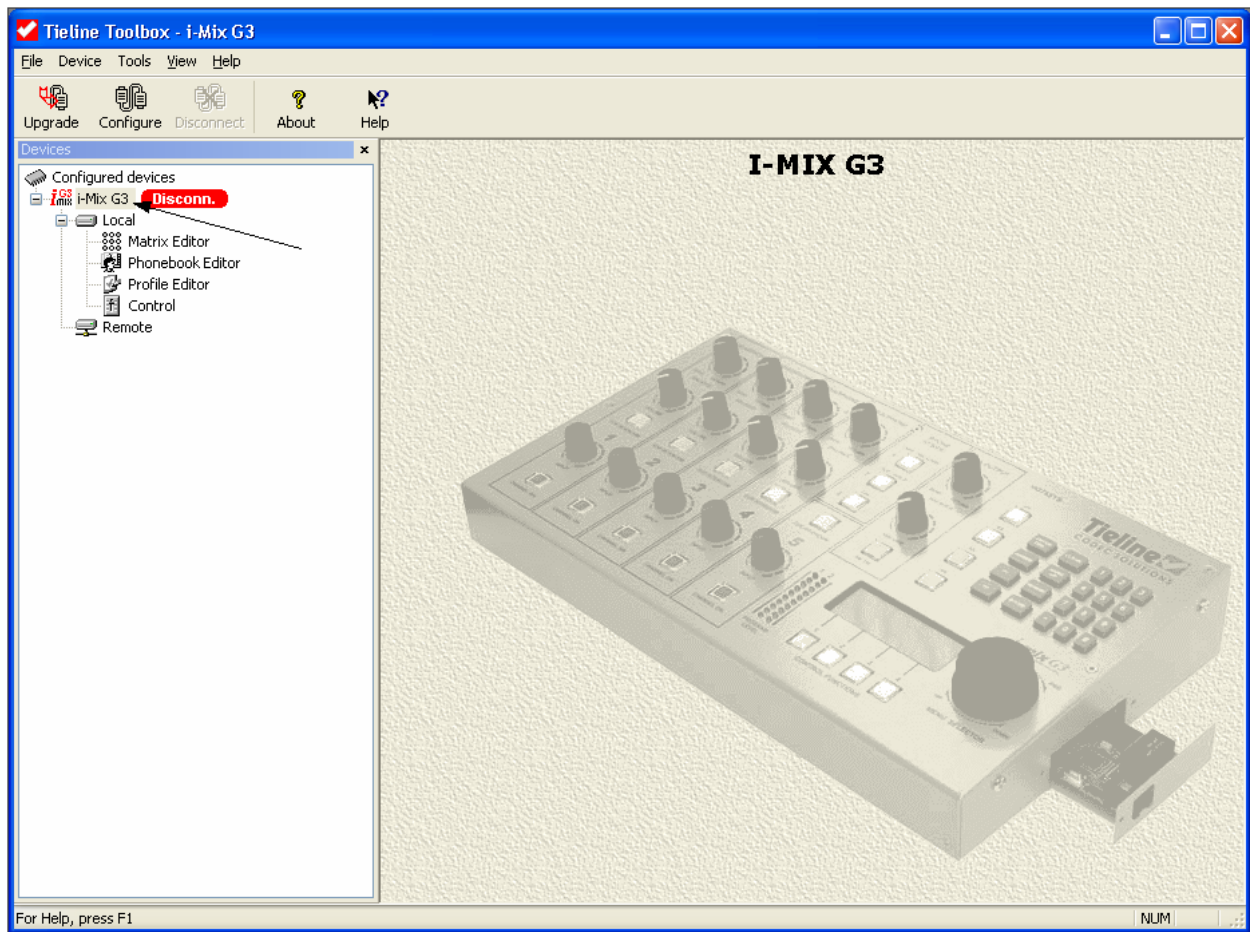
Select the device you would like to add and press "OK".



Enter a name for the new device (such as i-Mix G3) then click on the way you want to connect (such as USB).



When using USB, you can leave it set to “Auto Detect”. Click on “OK” to proceed.



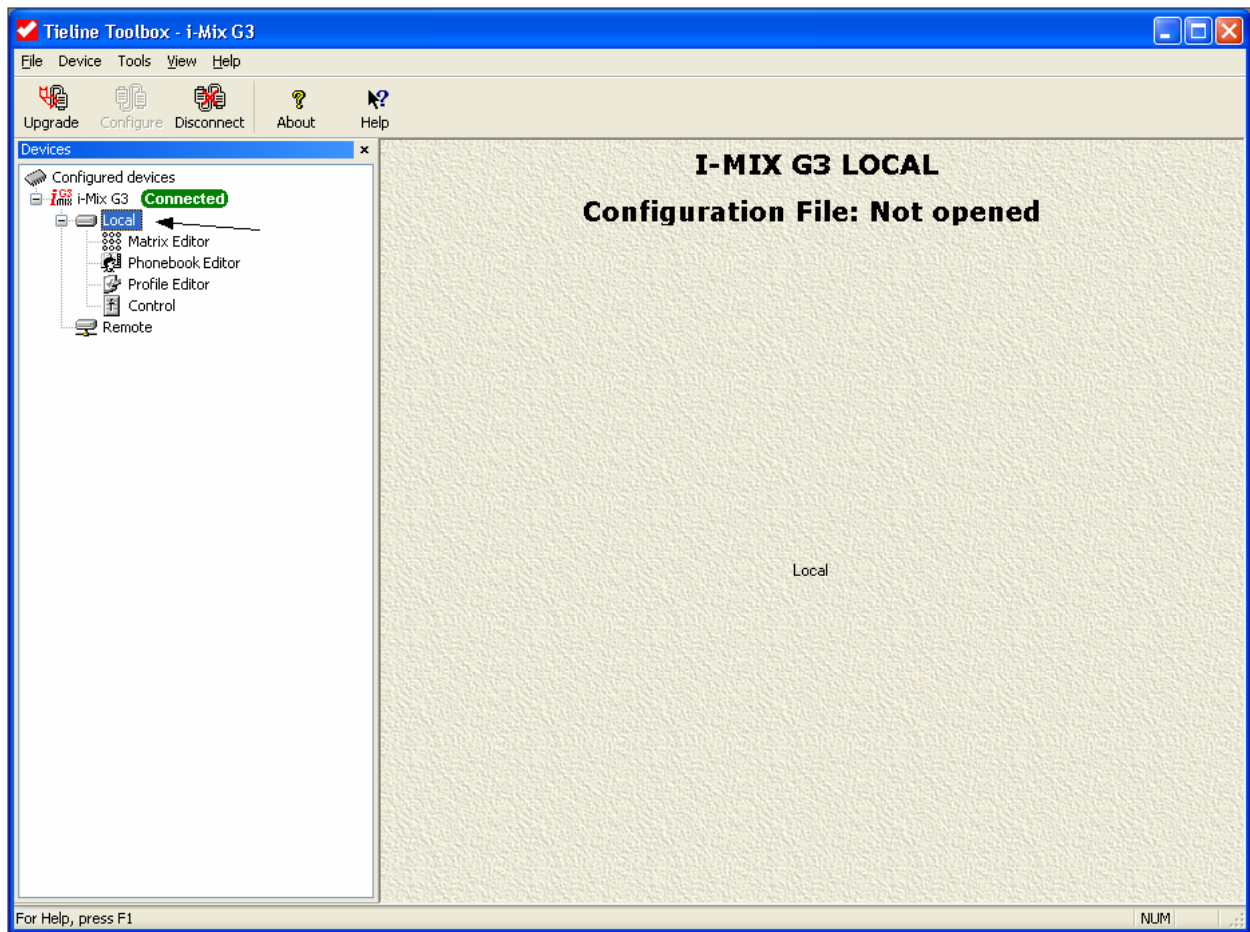
Click on the name of the new device you just created on the left side of the screen.

If you want to upgrade the software on the Tieline, click on the “Upgrade” button and follow the instructions.

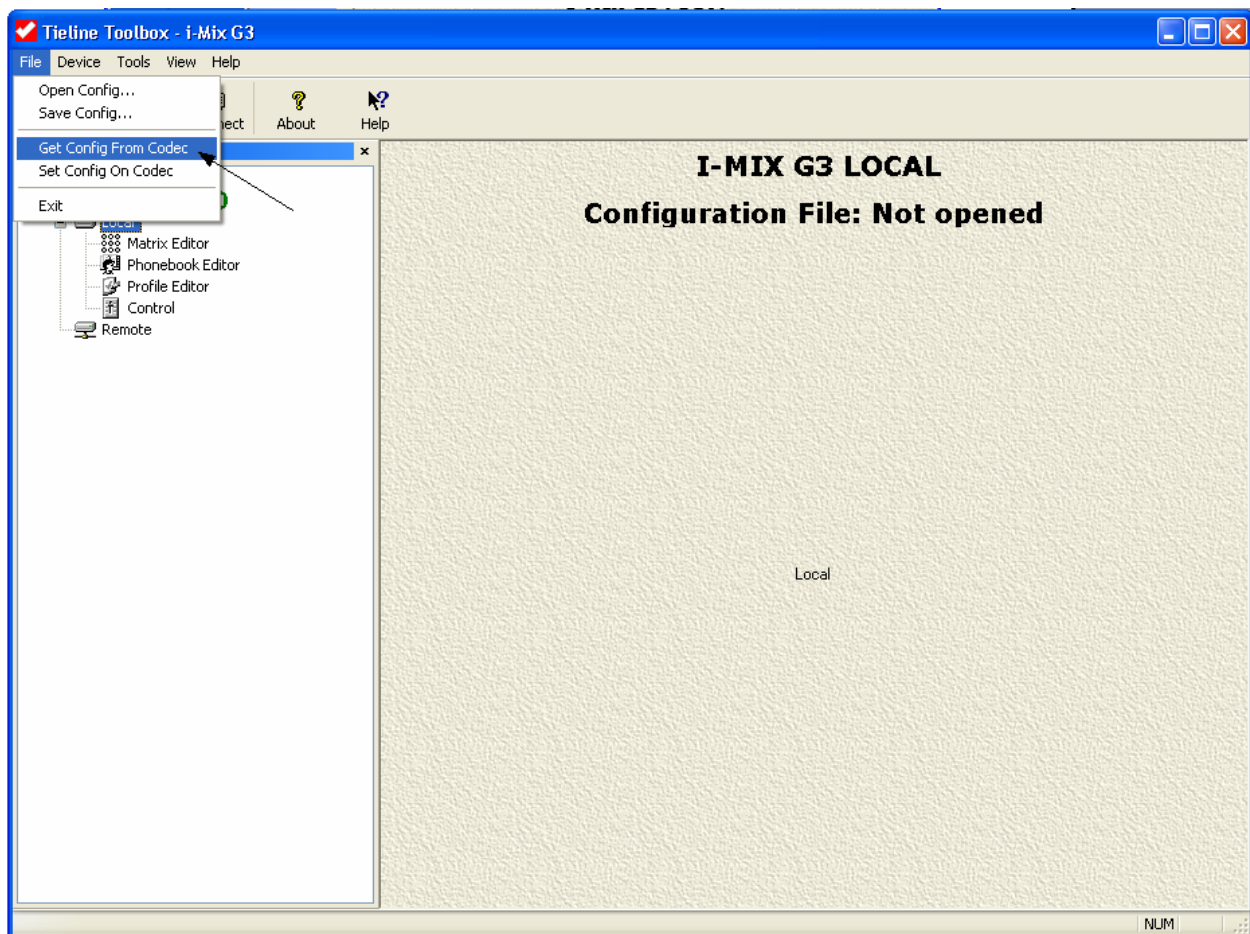
If you want to configure the Tieline, click on the “Configure” button and the Toolbox software will connect to the Tieline.



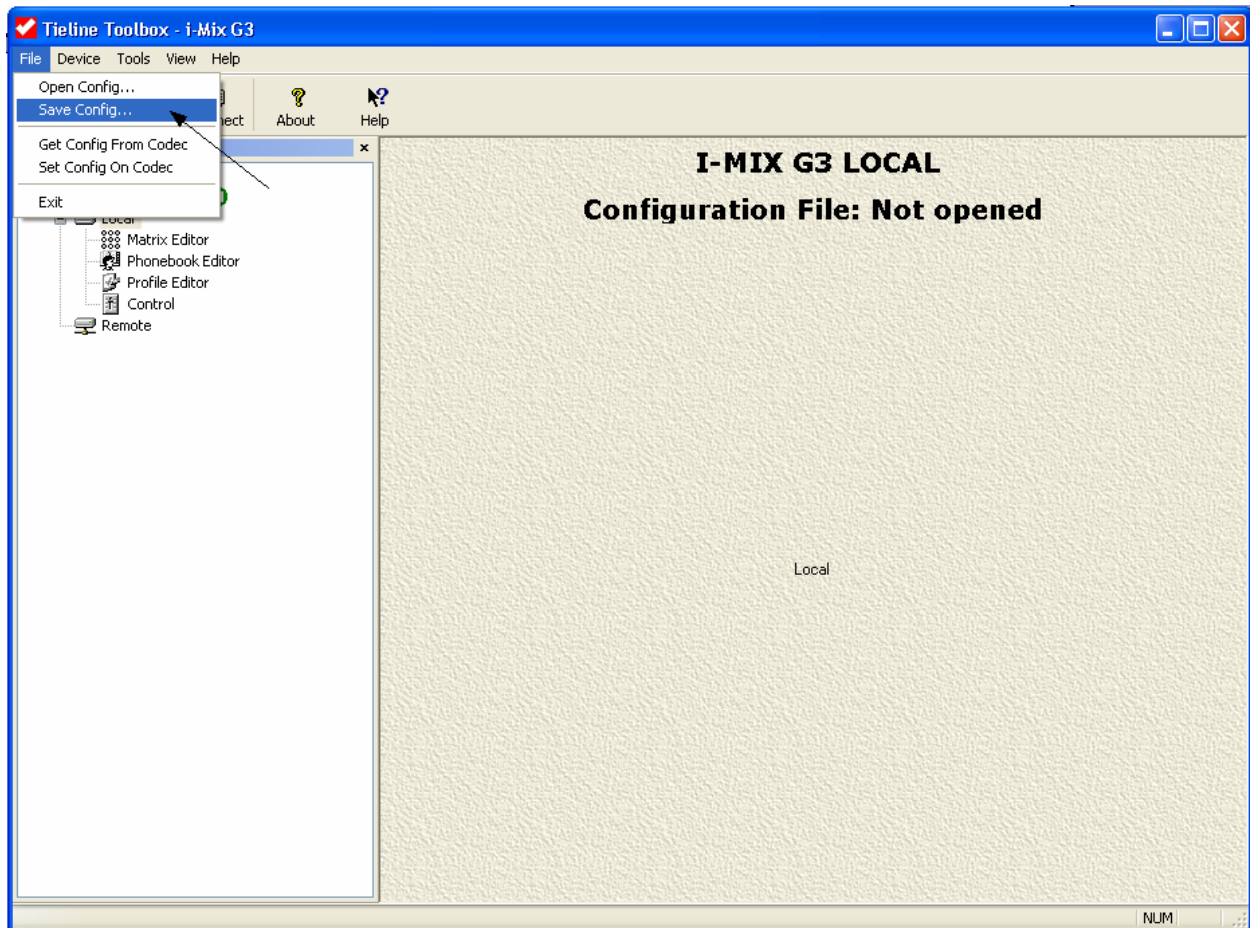
You are now connected to the Tieline using the Toolbox software.



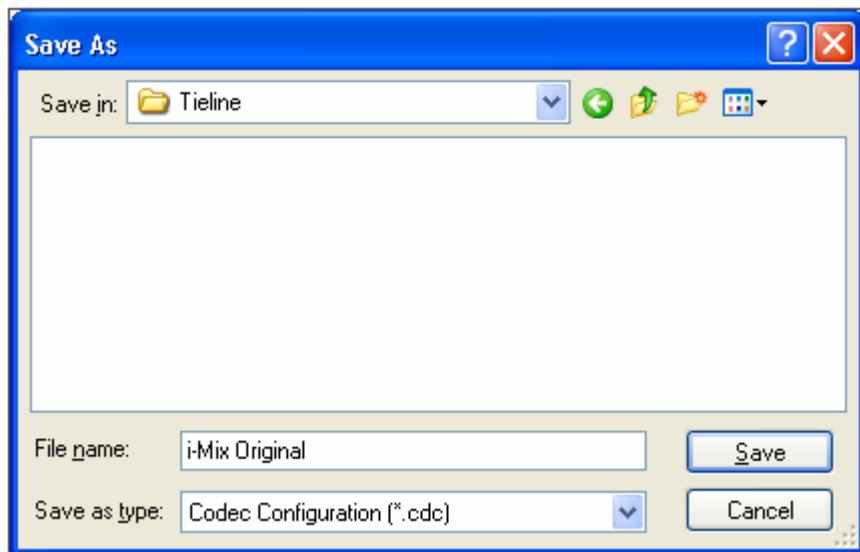
Next, click on "Local".



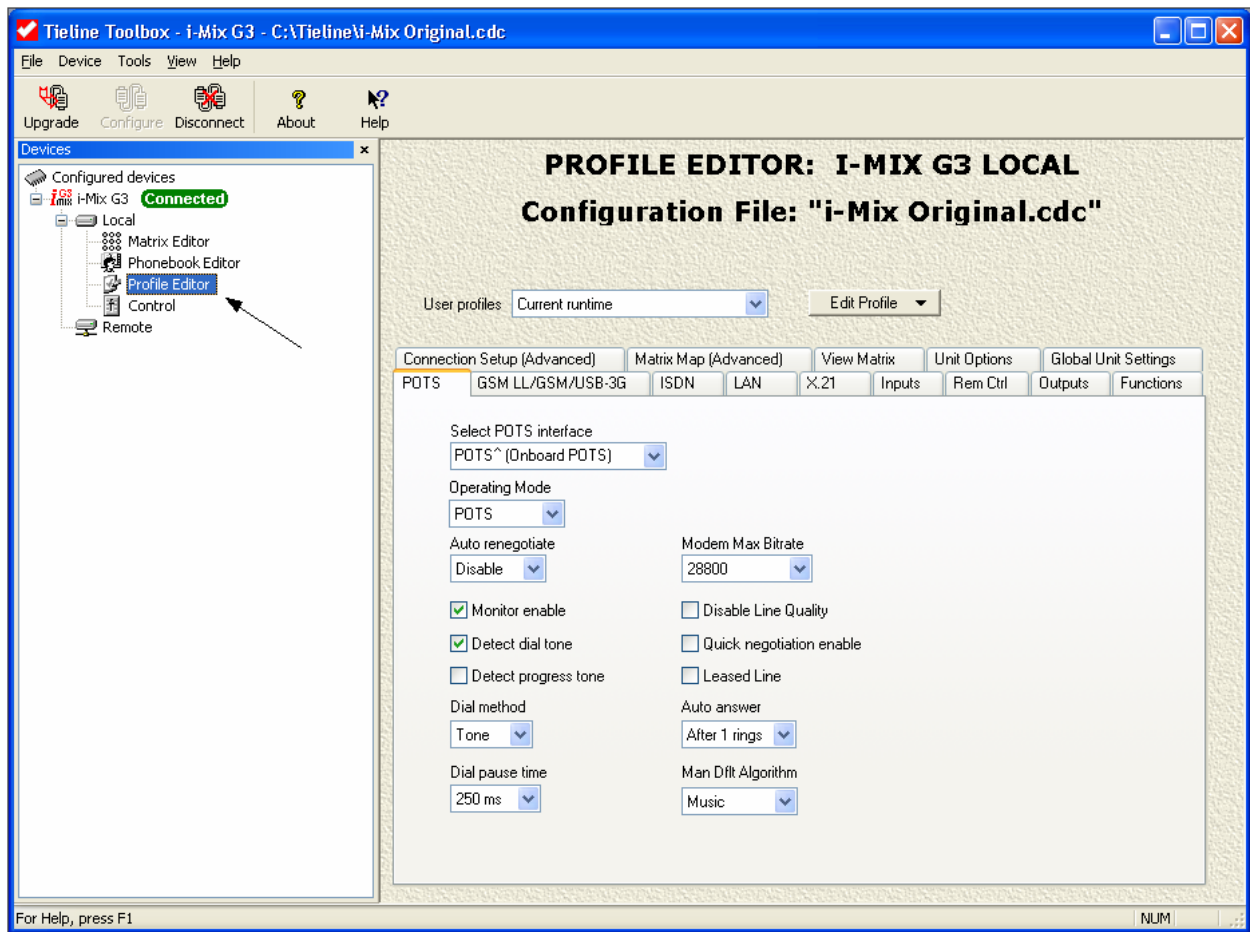
In the Tieline Toolbox software, select Profile Editor and then “Get Config From Codec” under the File pull down menu.



On the File pull down menu, select “Save Config” and save the original configuration to your PC (in case you need to reload the original configuration).



Name the file something and click on the “Save” button to continue.



Next, click on "Profile Editor". You are now ready to make changes to the default configuration.



User profiles: Current runtime Edit Profile

Connection Setup (Advanced)
Matrix Map (Advanced)
View Matrix
Unit Options
Global Unit Settings

POTS
GSM LL/GSM/USB-3G
ISDN
LAN
X.21
Inputs
Rem Ctrl
Outputs
Functions

Set PPM1 Display: Matrix
 Set PPM2 Display: Matrix

PA Controls
☐ CH 1 Output
☒ CH 2 Output

Min H/P T/B level: 
 Aux output level: 

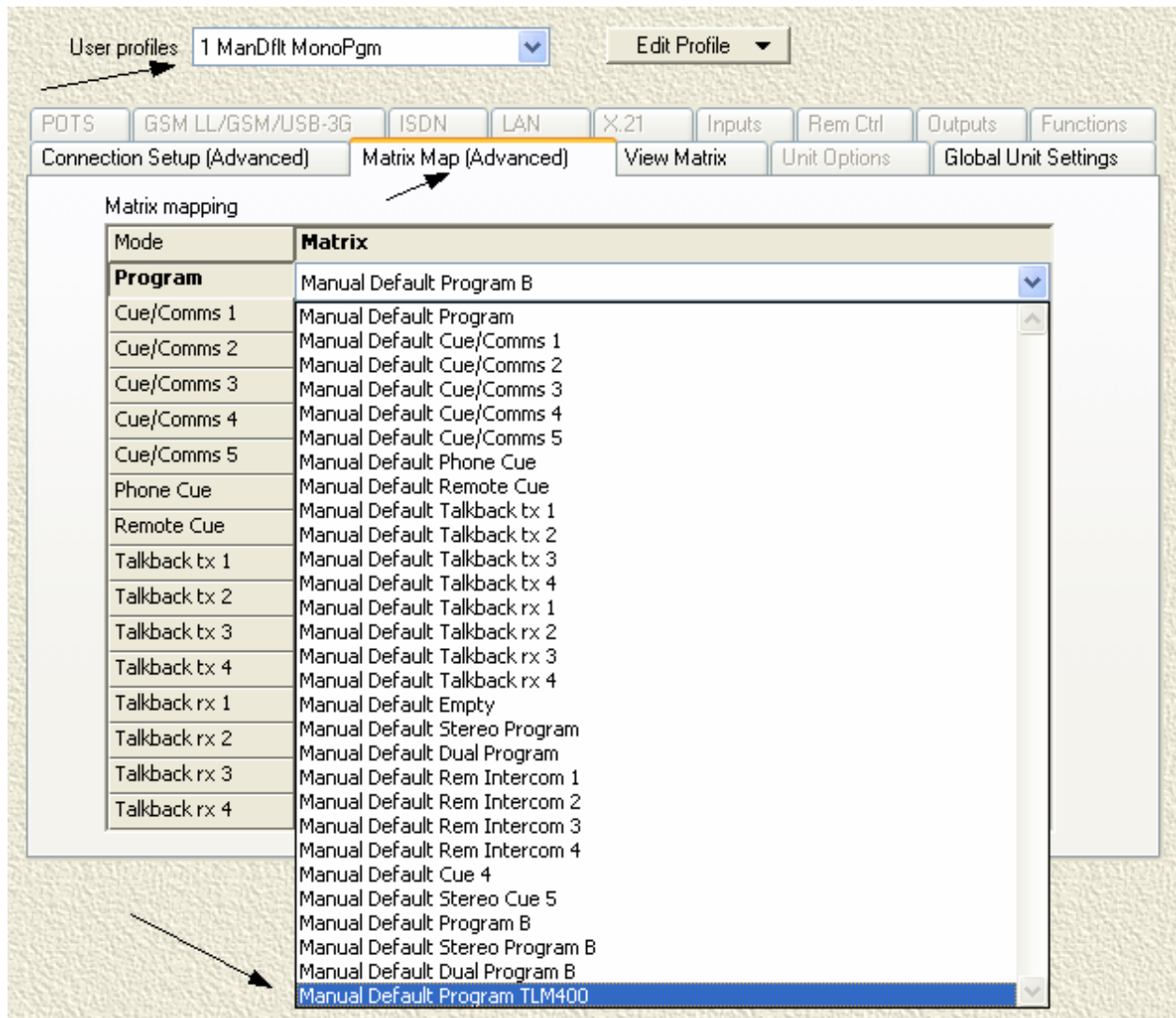
☒ Enable AGC

Mix (Send/Return) Pan Matrix

	Send	Return
Input 1	✓	
Input 2	✓	
Input 3	✓	
Input 4	✓	
Input 5	✓	
Phone Aux	✓	
Decoder 1		✓
Decoder 2		✓

Go to the Outputs tab. Click on the box for "PA Controls CH2 Output" to select this option.

Next, on the Matrix Map (Advanced) tab, select the “ManDflt MonoPgm” profile and select “Manual Default Program TL400” under the Program drop-down list.



The screen should now look like the following:

User profiles: 1 ManDflt MonoPgm Edit Profile

POTS GSM LL/GSM/USB-3G ISDN LAN X.21 Inputs Rem Ctrl Outputs Functions

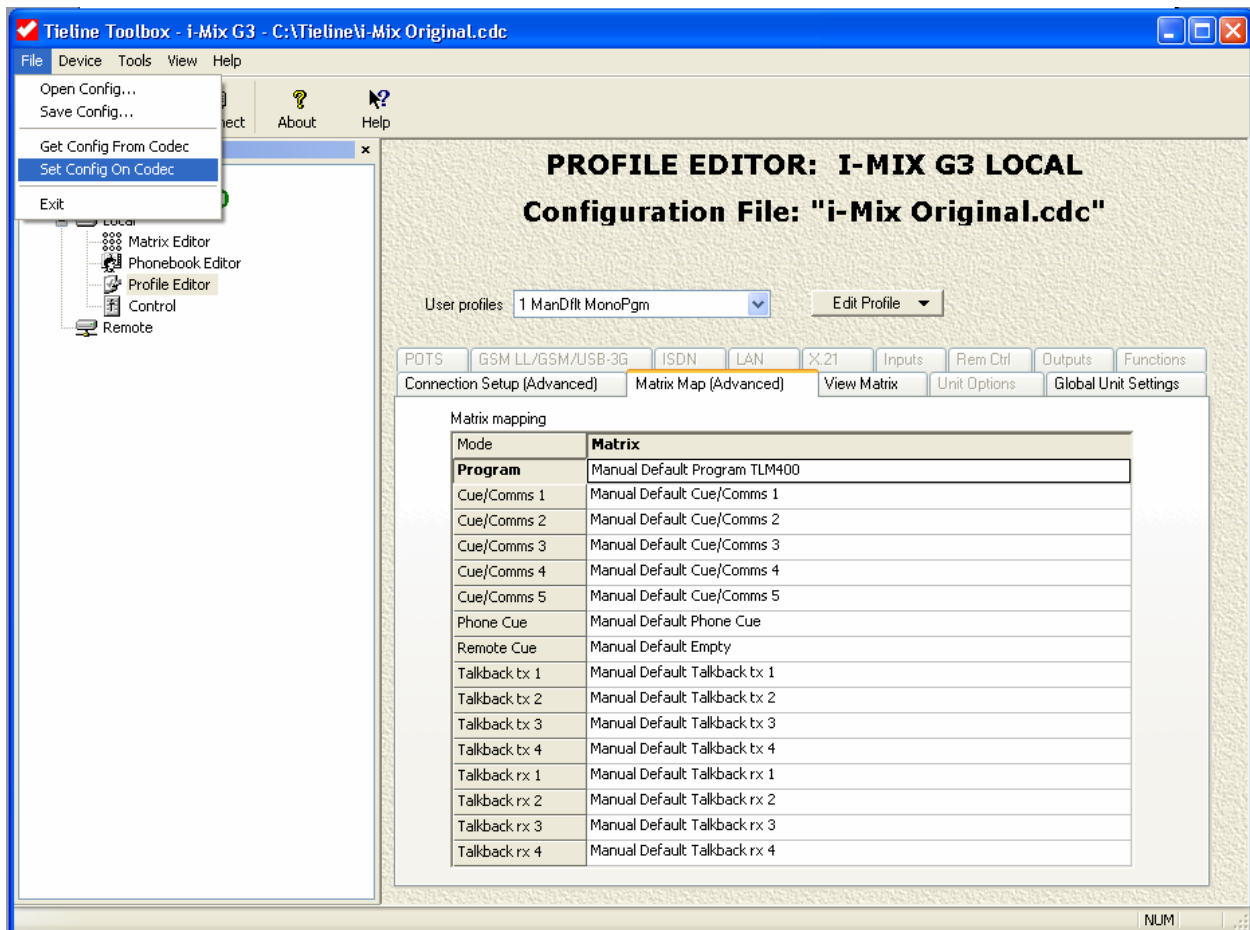
Connection Setup (Advanced) Matrix Map (Advanced) View Matrix Unit Options Global Unit Settings

Matrix mapping

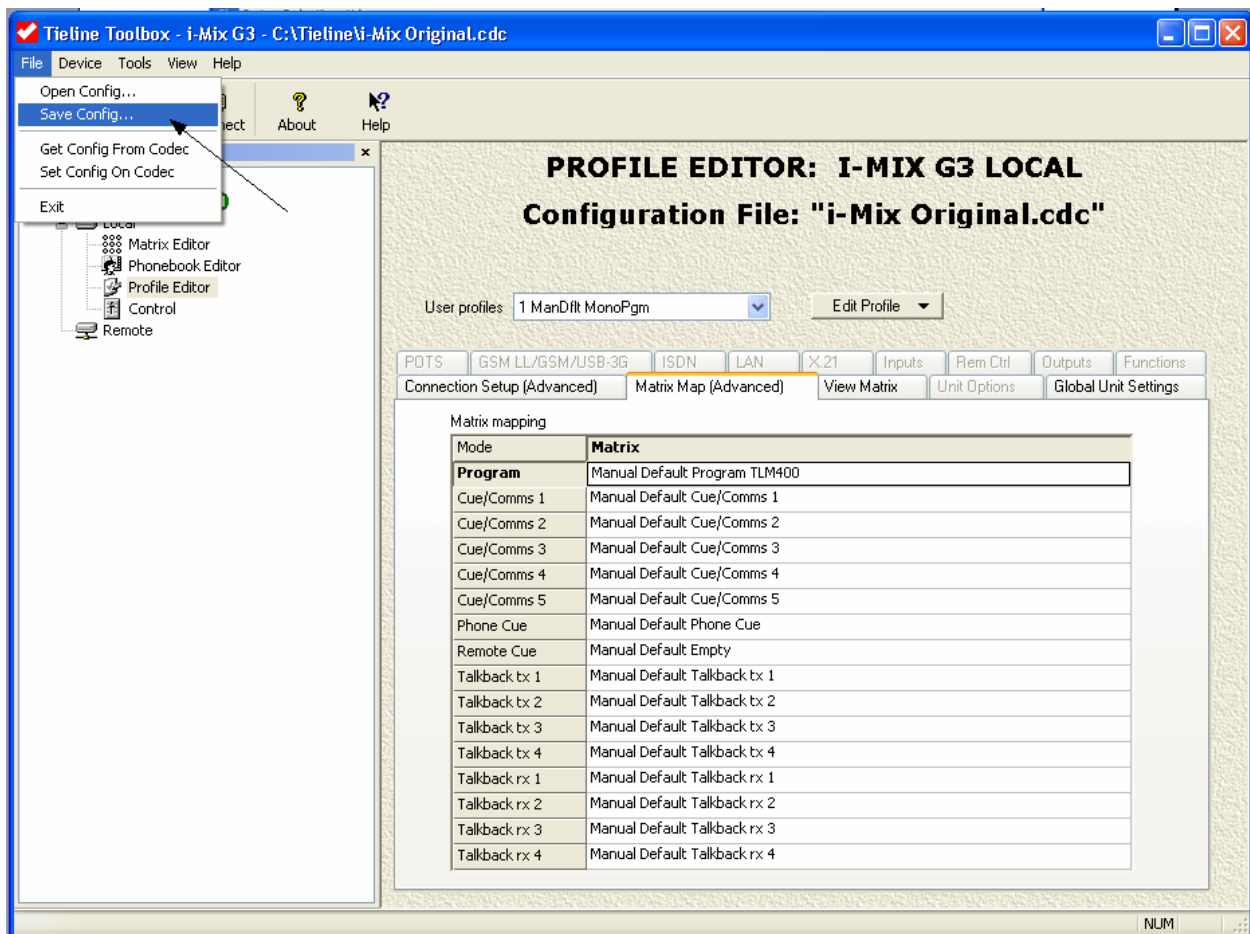
Mode	Matrix
Program	Manual Default Program TLM400
Cue/Comms 1	Manual Default Cue/Comms 1
Cue/Comms 2	Manual Default Cue/Comms 2
Cue/Comms 3	Manual Default Cue/Comms 3
Cue/Comms 4	Manual Default Cue/Comms 4
Cue/Comms 5	Manual Default Cue/Comms 5
Phone Cue	Manual Default Phone Cue
Remote Cue	Manual Default Empty
Talkback tx 1	Manual Default Talkback tx 1
Talkback tx 2	Manual Default Talkback tx 2
Talkback tx 3	Manual Default Talkback tx 3
Talkback tx 4	Manual Default Talkback tx 4
Talkback rx 1	Manual Default Talkback rx 1
Talkback rx 2	Manual Default Talkback rx 2
Talkback rx 3	Manual Default Talkback rx 3
Talkback rx 4	Manual Default Talkback rx 4

Verify the following before proceeding:

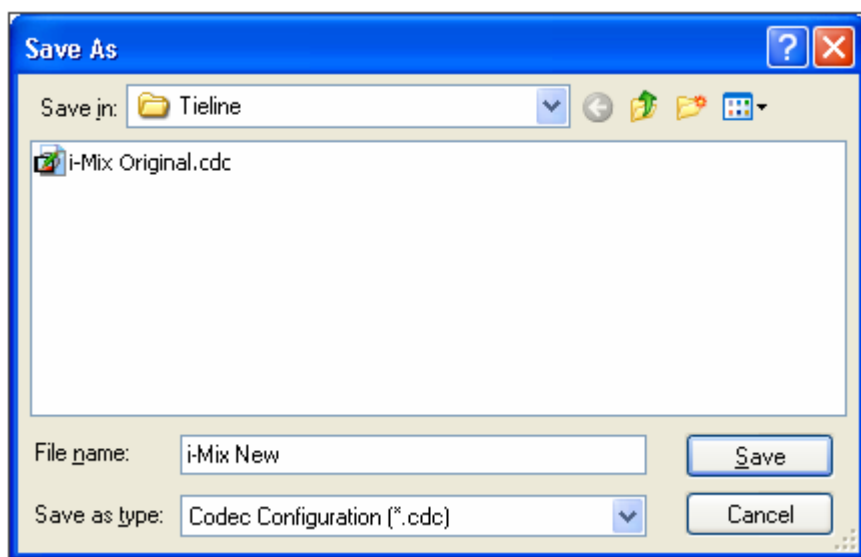
User profiles = 1 ManDflt MonoPgm
Program Matrix = Manual Default Program TLM400



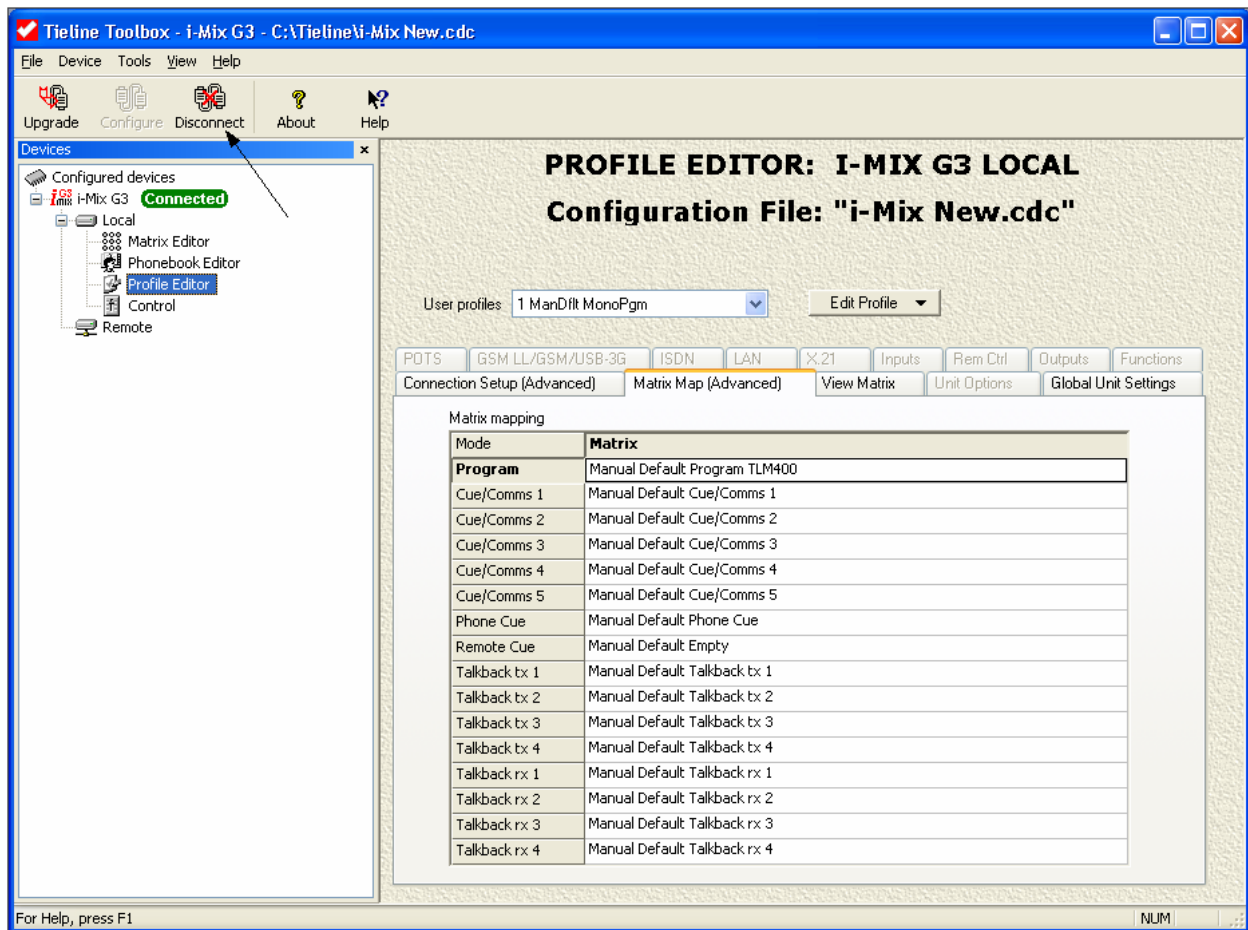
On the File pull down menu, select "Set Config On Codec".



On the File pull down menu, select "Save Config" and save the new configuration to your PC.



Name the file something and click on the "Save" button to continue.



Click on the “Disconnect” button then close the Tieline Toolbox software and proceed to the i-Mix G3 codec itself.



On the i-Mix G3, select Menu > Load Profile > ManDflt MonoPgm > Yes

On the back of the i-Mix G3, Program Output CH 1 provides a fixed line level local (Send) audio output. Program Output CH 2 will now provide a PA output that you can control both the Send/Return mix as well as the Gain (Volume knob).

Here is the Matrix for the profile you have modified (please see the i-Mix manual for more details):

User profiles: 1 ManDflt MonoPgm
Edit Profile ▼

POT5
Connection Setup (Advanced)

GSM LL/GSM/USB-3G
Matrix Map (Advanced)

ISDN
View Matrix

LAN
Unit Options

X.21
Global Unit Settings

Inputs

Rem Ctrl

Outputs

Functions

Mute return

Mute Program

☒ TB tx
☐ TB rx

Cue/Comms

TB

Cue/Comms

TB

Cue/Comms

TB

Cue/Comms

TB

Cue/Comms

TB

Phone Cue

Remote Cue

	Encoder 1	Encoder 2	CH 1 Out	CH 2 Out	HP1 L	HP1 R	HP2 L	HP2 R	HP3 L	HP3 R	HP4 L	HP4 R	Phone Out	Auxiliary	PPM 1	PPM 2
Input 1	✓		✓	✓	✓	✓	✓	✓	✓	✓	✓	✓	✓	✓	✓	
Input 2	✓		✓	✓	✓	✓	✓	✓	✓	✓	✓	✓	✓	✓	✓	
Input 3	✓		✓	✓	✓	✓	✓	✓	✓	✓	✓	✓	✓	✓	✓	
Input 4	✓		✓	✓	✓	✓	✓	✓	✓	✓	✓	✓	✓	✓	✓	
Input 5	✓		✓	✓	✓	✓	✓	✓	✓	✓	✓	✓	✓	✓	✓	
Phone Aux	✓				✓	✓	✓	✓	✓	✓	✓	✓				
Decoder 1				✓	✓	✓	✓	✓	✓	✓	✓	✓				✓
Decoder 2																