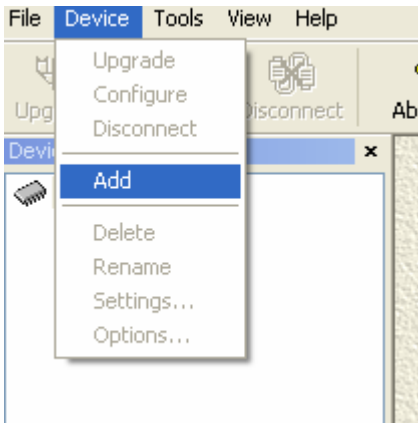


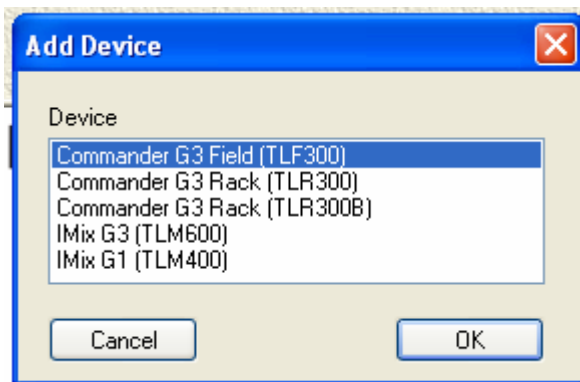
How To Set Up a 1 Button 3G+IP Connection

Tieline codecs include a powerful Function Manager software engine which enables you to program automatic operations into the codec using the Tieline Toolbox software. In this tutorial, we will learn how to program a 1 Button 3GIP connection using Function Manager and Phonebook Editor. Please ensure that the RPTP version of your toolbox software matches the RPTP version of your software on the codec. You can check this by powering up your codec and choosing MENU→UNIT DETAILS and scrolling down to the RPTP line. Then match this against the version number of the toolbox software you have by comparing it to the file name ie “TielineToolboxV41432Rptp102.exe”

First, connect the Toolbox to the Tieline codec via Serial, USB or IP.



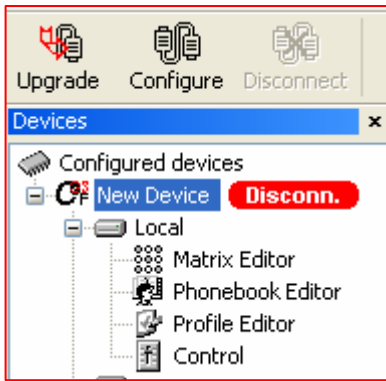
In this example we are connecting to a codec via IP. Click DEVICE and then choose ADD.



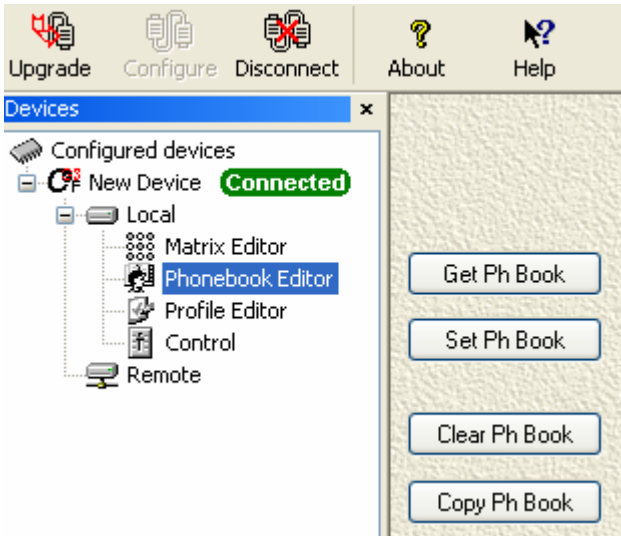
Select the codec type you are connecting too. In this case it is a TLF300 Commander G3 field codec.



Type in your LAN IP address and select test. IF the codec is connected properly it will present a message confirming a codec found on that IP address. Then choose OK.



Now click on NEW DEVICE on the codec you wish to connect so that it is highlighted and choose the CONFIGURE Button on the toolbar



Once Connected choose the PHONE BOOK EDITOR and then CLICK ON GET PH BOOK. If there are any numbers saved in your codec already it will populate the phone book fields in Toolbox.

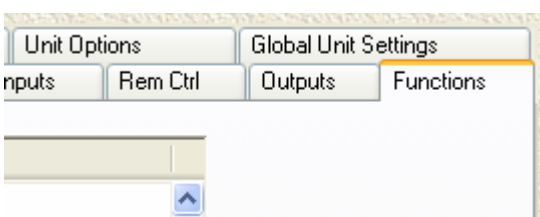
	Name	Number	Profile
1	Studio 3GIP Code	203.36.205.188	ManDfkt MonoPgm
2			

Now type the name of the studio connection, enter the public static IP address of the studio and choose the preferred profile – normally mono. Take note of the Memory location number. – note in this case it is memory location 1.

Then click SET PH BOOK to program the codec with this new information.



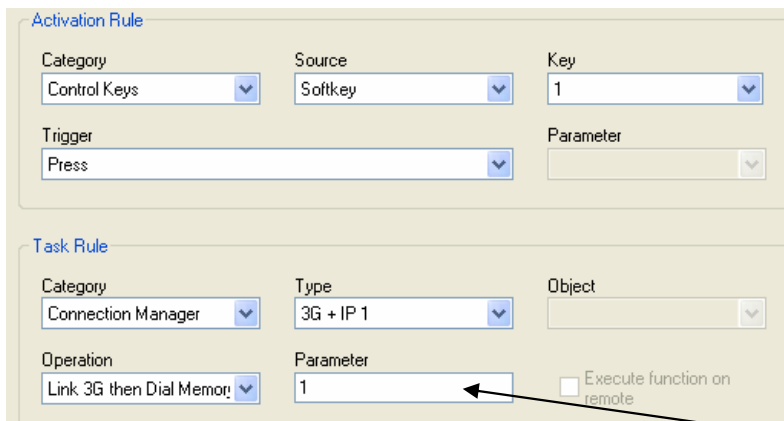
Now select the Profile Editor on the codec you are connected to



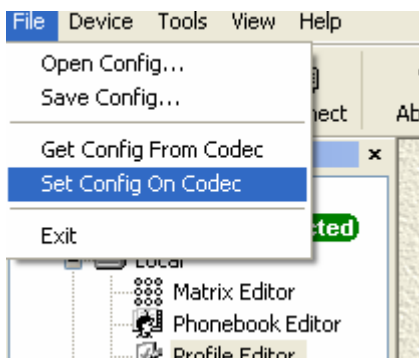
Then select the FUNCTIONS tab.



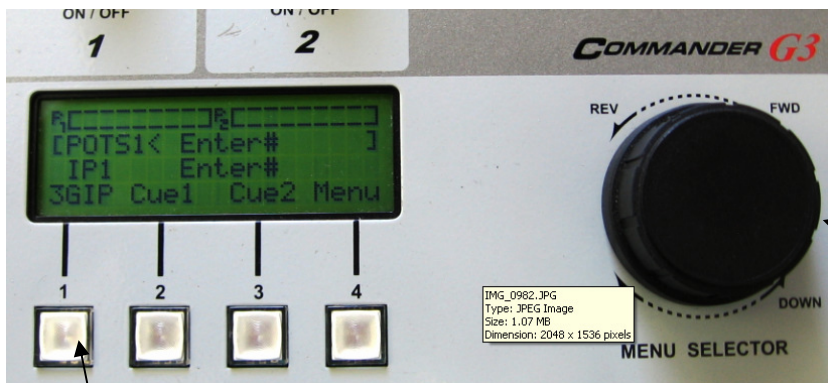
Now type "3GIP" into the Softkey 1 Location at the bottom left of the window. Once this is typed... choose ADD FUNCTION



Select the following parameters. Make sure you put the correct memory location number from your phone book in this box. Then Choose OK.



Now Choose FILE then SET CONFIG ON CODEC. This will set the new function manager rule on the codec.



There are two steps to connecting the Tieline codec now that this new function has been programmed.

Step 1. Hold down the Rotary encoder for 2 seconds. You will notice that 3GIP appears under the white Softkey 1.

Step 2. Now press Softkey 1. The codec should automatically connect to the 3G network first and then dial the IP address stored in memory location 1. Hold down the Black rotary encoder again for 2 seconds to restore normal Softkey menus.