



## 1.1. Configuration Files Explained

One of the great features of the **Tieline G3** platform is the Configuration File system. It enables a user to configure a codec prior to a broadcast, minimizing the amount of adjustments a broadcaster has to make when arriving at the site.

Configuration Files are created by the **Toolbox** PC application, supplied with every **G3** codec. This software application has comprehensive editing facilities to enable the user to configure their codec for every broadcast they are likely to do. Each Configuration File can contain:

1. Default and User Created Profiles,
2. Default and User Created Routing Matrices, and
3. A Phone Book.

## 1.2. The Relationship between Configuration Files, Profiles and Matrices

**Tieline** codecs operate in pairs. Typically, one will be a field unit codec at a venue and the other will be in the studio. The studio codec could be a field unit or rack unit codec. It could also be a rack unit codec with a GUI (Graphical User Interface).

Codecs are programmed with Configuration Files which contain 'Profiles'. These profiles contain code that programs a codec to perform as either the 'local' or 'remote' codec. In other words, it defines how a **G3** codec is configured. Each Configuration File contains up to 36 unique profiles – each one can configure the codec for a different broadcast situation. There is a set of default profiles in each **Tieline** codec that will suit many broadcast applications.

Each profile can be individually tailored to suit a user's requirements. It can then be assigned a name that relates to the remote broadcast site or event that it is to be used for. Using profiles to manage a codec's operation enables a user to go to a remote site, plug in the codec and simply press **START** to connect to the studio. It can't get much simpler than that.

Within each profile is a set of matrices that define the routing of audio throughout a codec. There is a set of default matrices in each codec and users can adjust these and create new custom matrices to suit individual broadcast requirements.

## 1.3. Different Codec Configuration Files

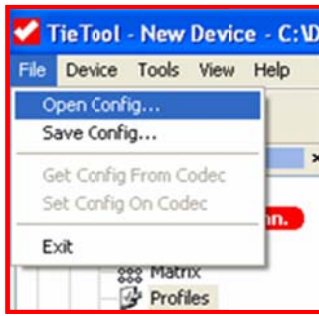
Configuration files differ between different codecs, i.e. an **i-Mix G3** versus a **COMMANDER G3** (or a **COMMANDER G3** rack unit codec and a field unit codec) etc. This is because profiles, and the matrices within them, differ between different codecs depending on the routing functionality available in a particular codec.

If you use different **Tieline** codecs it is critical that you load appropriate configuration files into each codec you are using. When you create new configuration files it is a good idea to clearly identify the file as being for a particular codec type. This will assist you to load the correct file onto your codecs.

## 1.4. Set, Get, Save and Open Functions of Configuration Files

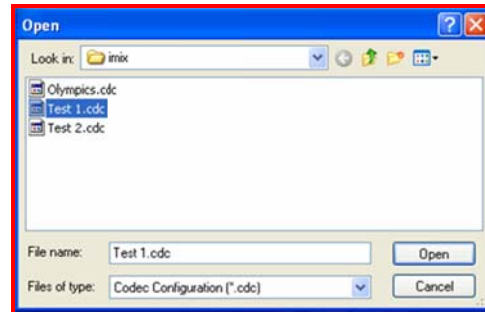
All of these functions have their commands displayed in the drop-down box from the **File** menu in Toolbox software.

To open a Configuration File you that you have created and saved on your PC, first open Toolbox software. Then click on **File** in the top left corner of the Toolbox main menu. A drop-down box will appear as shown below.



Click on *Open Config*, which will open a new menu showing the Codec Configuration files you have saved on your PC. These files have a \*.cdc file extension. Select the file you wish to open and click on it once, in the example below we are selecting the file *Test 1.cdc*. Now click on *Open* to open the file. Your settings for this file are then loaded into Toolbox and you can view, adjust and save any changes you make. In addition, you can download the profiles onto a codec.

To save a new or amended Configuration File simply click on **File** in the top left corner of the Toolbox main menu. A drop-down box will appear and then click on *Save Config*. This will open a new menu screen allowing you to name the file and then click save to save it.



The complete list of configuration file menu functions is explained below.

<i>Open Config</i>	Opens a Codec Configuration *.cdc file from on the PC
<i>Save Config</i>	Saves the Configuration settings into the PC as a codec configuration *.cdc file
<i>Get Config From Codec</i>	Loads the Configure settings into the PC from the codec.
<i>Set Config On Codec</i>	Writes the displayed Configure menu to the codec from the PC.

**Configuration File Menu Options**