

## How to Configure Two Bidirectional Connections in Dual Program Mode

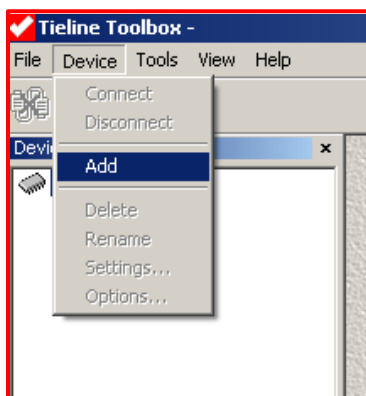
This document will enable you to configure your Tieline G3 studio codec and connect two Report-IT or G3 codec remotes from different locations to the same Tieline Commander or iMix G3 codec at the studio. Ensure you are using Report-IT v.3.0.7 and G3 firmware v.1.6.84 or higher before programming the following settings.

1. If you are using two iPhones with Report-IT you can connect to the studio over IP and you only need to perform step 1.
2. If you are using a Commander G3 or i-Mix G3 field codec for your remotes you can connect two codecs simultaneously to the studio G3 codec over POTS, ISDN, IP or wireless networks. You will need to perform both step 1 (studio codec) and step 2 (remote G3 codecs).

**Please note:** The default **Man Dflit Dual Program** audio matrix is configured to send the same program from the studio to two remote end points, which can be used for audio distribution, or two separate bidirectional audio remotes.

### Step 1. Configure the Studio G3 Codec:

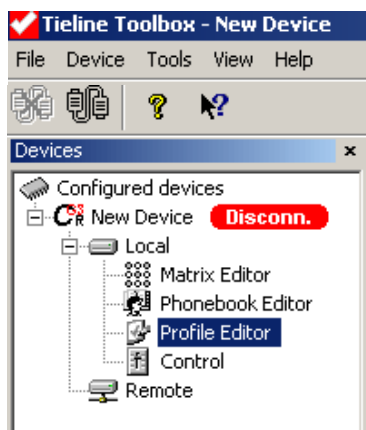
Note: This configuration is only required on the studio G3 codec, not the remote G3 codecs.



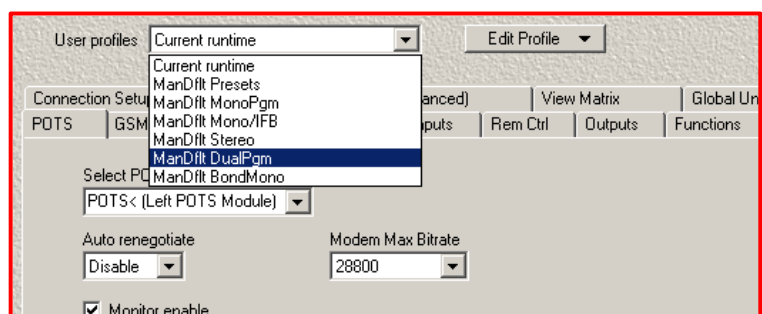
1: Connect Toolbox to your codec



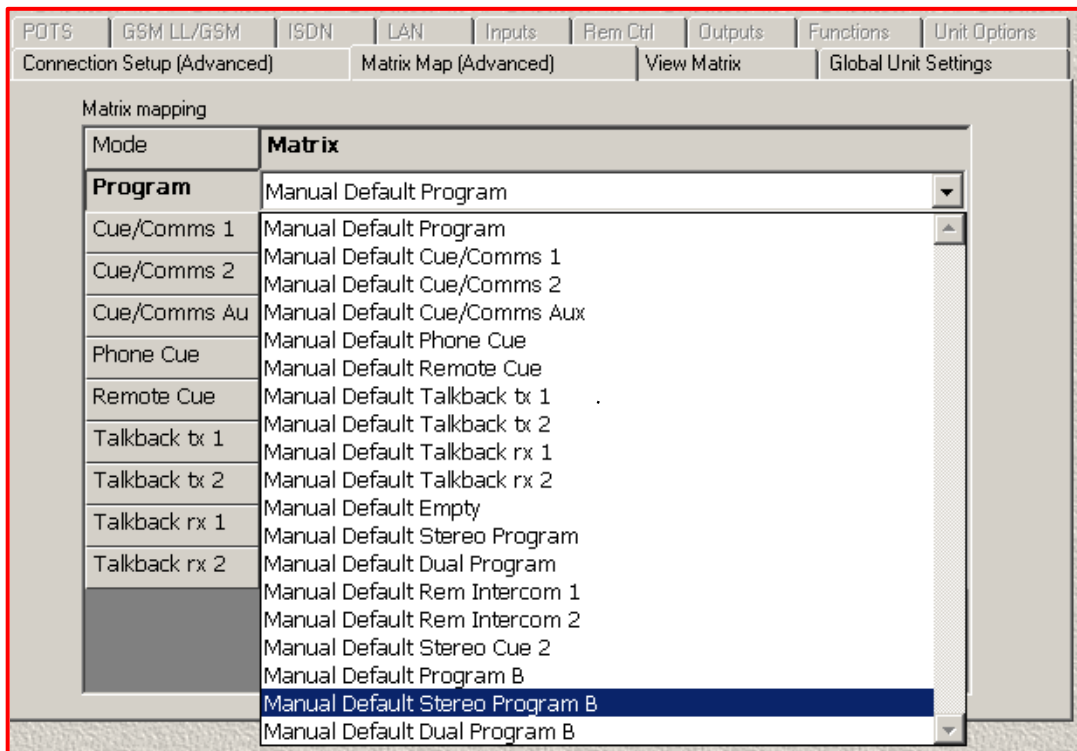
2: Choose your connection type and click **OK** to connect



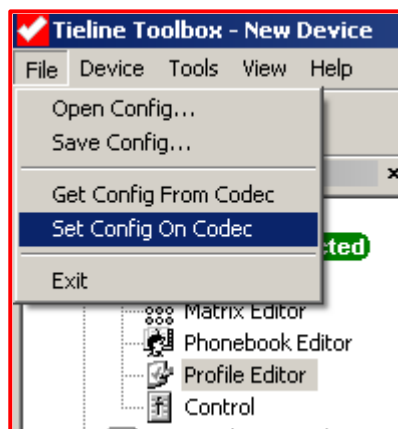
3: Click on **Profile Editor** and select the **Matrix Map** Tab



4: Select **ManDflit Dual Program**



5: Select the **Matrix Map (Advanced)** tab. Then click on the right-hand corner of the **Program** Mode and use the drop-down menu to select **Manual Default Stereo Program B**. The “Manual Default Stereo Program B” matrix lets you connect two independent bi-directional channels.



6: Transfer the changes onto the codec

## Step 2: Configure Remote G3 Codex for Bidirectional Dual Mono Program Connections

1. Open Toolbox software and select the **Profile Editor**, then select the **Man Dflt Dual Pgm** profile.
2. Click the **Connection Setup** tab:
  - a. Select **Connection 1** in the **Connection No** drop-down list box.
  - b. Select **Enable connection**.
  - c. In the **Connection type** drop-down list box select **Any**.
  - d. Change your Tieline connection **Algorithm** if required.
  - e. Under **Codec channel** select check box **1**.
  - f. Select **Disabled** in the **Failover profile** drop-down list box (unless you want to program this).

User profiles: 5 Dual Mono Rem 1 [Edit Profile]

POTS | GSM LL/GSM/USB-3G | ISDN | IP / LAN | SIP | X.21 | Inputs | Rem Ctrl

Connection Setup (Advanced) | Matrix Map (Advanced) | View Matrix | Unit Options

Connection No: Connection 1 [Enable connection] [Standby]

Connection

Non Dialling

Number	Phbk#	Name
1	None	
2	None	
3	None	

Connection type: Any [Port(s):  1  2  3  4]

Algorithm: Music [Samplerate: ] [Codec channel:  1  2]

Automatic Redial: No. Redials: 0 [Redial interval [s]: 0]

Failover profile: Disabled [Remote profile: Disabled]

3. Click the **Matrix Map (Advanced)** tab and then click **Program Matrix** and select the **Manual Default Program** matrix in the drop-down list box.

Matrix mapping

Mode: Matrix

Program: Manual Default Program

Cue/Comms 1: Manual Default Program

Cue/Comms 2: Manual Default Cue/Comms 1

Cue/Comms Aux: Manual Default Cue/Comms 2

Phone Cue: Manual Default Cue/Comms Aux

Remote Cue: Manual Default Phone Cue

Talkback tx 1: Manual Default Remote Cue

Talkback tx 2: Manual Default Talkback tx 1

Talkback rx 1: Manual Default Talkback tx 2

Talkback rx 2: Manual Default Talkback rx 1

Manual Default Talkback rx 2

Manual Default Empty

Manual Default Stereo Program

Manual Default Dual Program

Manual Default Rem Intercom 1

Manual Default Rem Intercom 2

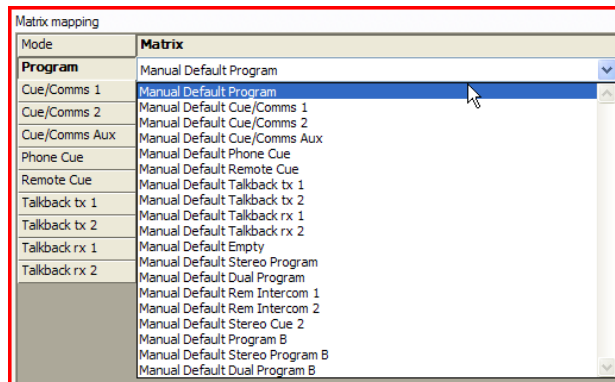
Manual Default Stereo Cue 2

Manual Default Program B

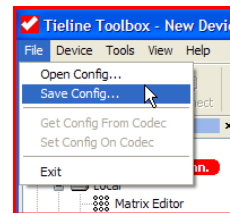
Manual Default Stereo Program B

Manual Default Dual Program B

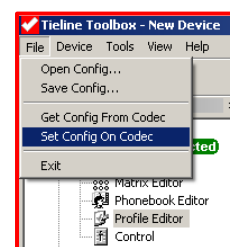
4. Connect the second remote codec to Toolbox software and select the **Profile Editor**, then select the **Man Dflt Dual Pgm** profile:
  - a. Select **Connection 2** in the **Connection No** drop-down list box.
  - b. Select **Enable connection**.
  - c. In the **Connection type** drop-down list box select **Any**.
  - d. Change your Tieline connection **Algorithm** if required.
  - e. Under **Codec channel** select check box **2**.
  - f. Select **Disabled** in the **Failover profile** drop-down list box (unless you want to program this).
5. Click the **Matrix Map (Advanced)** tab, then click **Program Matrix** and select the **Manual Default Program** matrix in the drop-down list box.



6. Click **File** on the menu bar in Toolbox and select **Save Config...** to save the file on your PC.



7. Connect the first codec to Toolbox on your PC.
8. Click **File** on the menu bar and select **Set Config on Codec** to upload the .cdc file you created onto the codec.
9. Disconnect Toolbox from the codec and connect Toolbox to the second remote codec and upload the same configuration file onto the codec.



### Notes on Connecting

When dialing over POTS/PSTN, each remote codec will always connect to the POTS module at the studio it is dialing.

When dialing over IP, one remote codec must use 'codec channel 1' and dial over IP 1 and the other remote codec must use 'codec channel 2' and dial over IP 2.

Over ISDN if you have different numbers for each ISDN B channel at the studio, each incoming call from the remote site will connect to a different B channel.

If one connection is made by a G3 codec and the other by an iPhone using Report-IT, ensure both devices do not dial over the same IP 1 or 2 connections.