

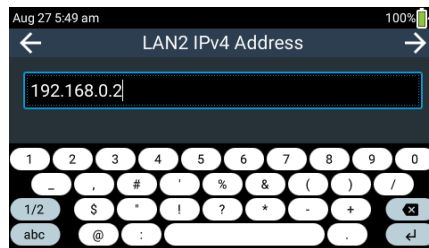
CONNECTING A LAPTOP DIRECTLY TO A VIA CODEC

PURPOSE

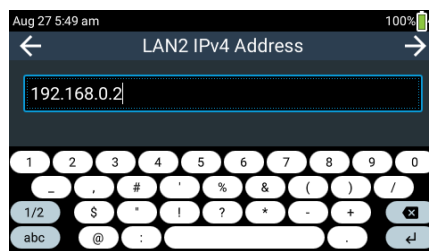
This tech note explains how to connect a PC directly to a ViA codec when a LAN is unavailable. Note: If you use a USB to Ethernet adapter with a laptop this procedure may not be required.

ENTER A STATIC IP ADDRESS INTO THE VIA CODEC

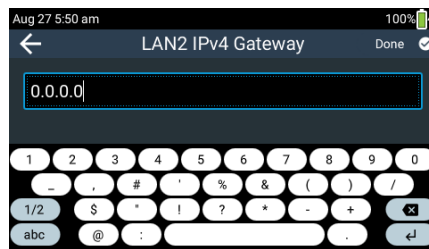
1. Attach a LAN cable directly between your PC and the ViA codec.
2. Press the **HOME** button to return to the **Home** screen, then tap **Settings**.
3. Tap to select **Transport Interfaces** and then **LAN1** or **LAN2**.
4. Tap **Network Settings**.
5. Tap **IPv4 configuration**.
6. Tap to select **Static**.
7. Use the on-screen keyboard to enter the static IP address into the codec, e.g. 192.168.0.2, and then tap the **Right Arrow** in the top-right hand corner of the **TOUCH SCREEN**.



8. Enter the **IPv4 Subnet** mask into the codec, and then tap the **Right Arrow**.



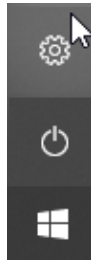
9. Enter the **IPv4 Gateway** details as required, then tap **Done** in the top-right hand corner of the **TOUCH SCREEN**.



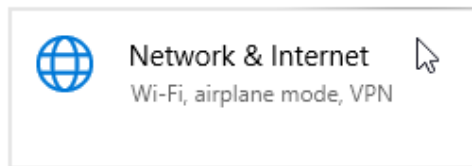
10. Tap **Save** in the top right-hand corner to reconfigure the codec with a static IP address.

CONFIGURE A STATIC IP ADDRESS IN WINDOWS 10

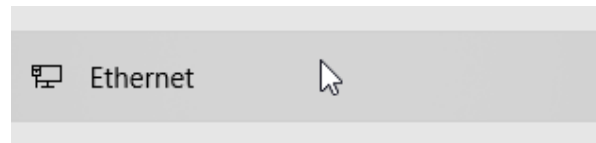
1. In Windows click **Settings**.



2. Select **Network and Internet**.



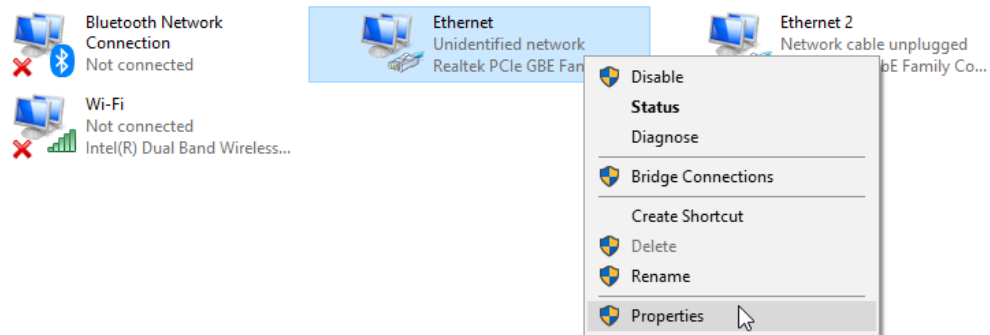
3. Select **Ethernet**.



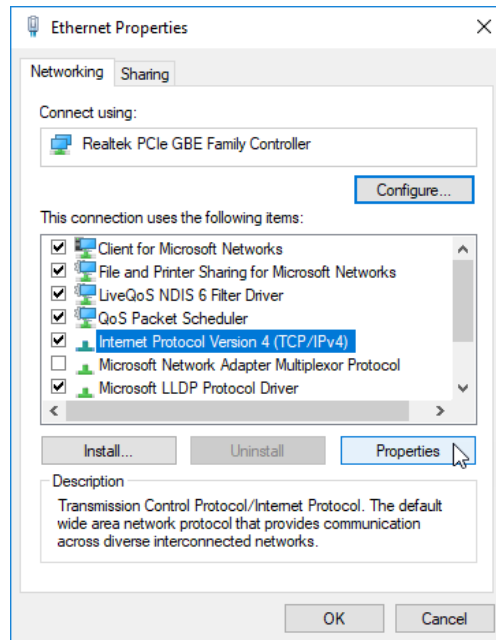
4. Select **Change adapter options**.

Related settings
[Change adapter options](#)

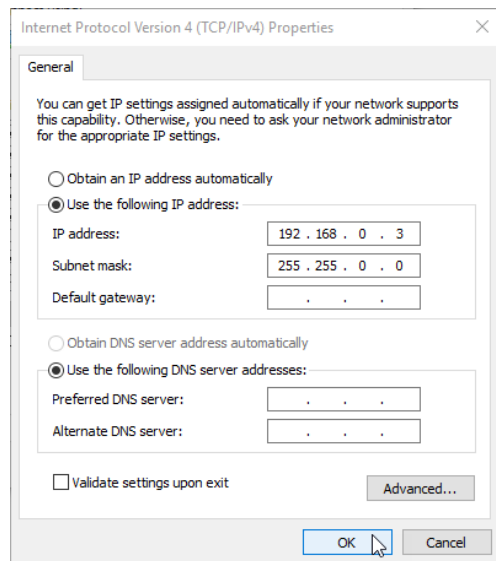
5. Right-click the Ethernet adapter connected to the port on the ViA and select **Properties**.



6. Select **Internet Protocol Version 4 (TCP/IPv4)** and then click **Properties**.



7. Enter a static **IP address**, e.g. 192.168.0.3, and **Subnet Mask** and click **OK**.



8. Type the IP address of the ViA codec in a browser and press **Enter** on your keyboard to configure the ViA codec using the Toolbox HTML Web-GUI.

IMPORTANT NOTES: A crossover cable may be required if you are using an old laptop which doesn't support Auto-MDIX (automatic medium-dependent interface crossover). This technology detects whether you need a crossover cable or a straight-through cable and automatically configures the network interface card. The ViA codec supports Auto-MDIX and if your laptop

supports using Gigabit Ethernet you will most likely be able to connect your PC with a regular straight-through cable and the NICs on either end will detect the cable and adjust accordingly.