

Creating Functions

Fail-Over from a Stereo ISDN Connection to Mono Pots Connection

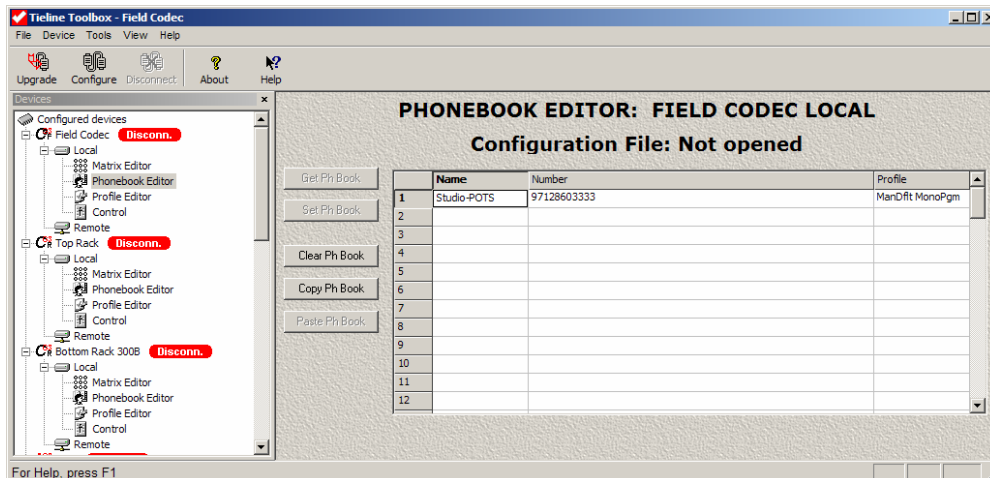
SOFTWARE VERSION: 1.4.00Rptp89 (Expected release date: 31st October 2006)

TIELINE TOOLBOX VERSION: 41164Rptp89.exe or later

PROCEDURE:

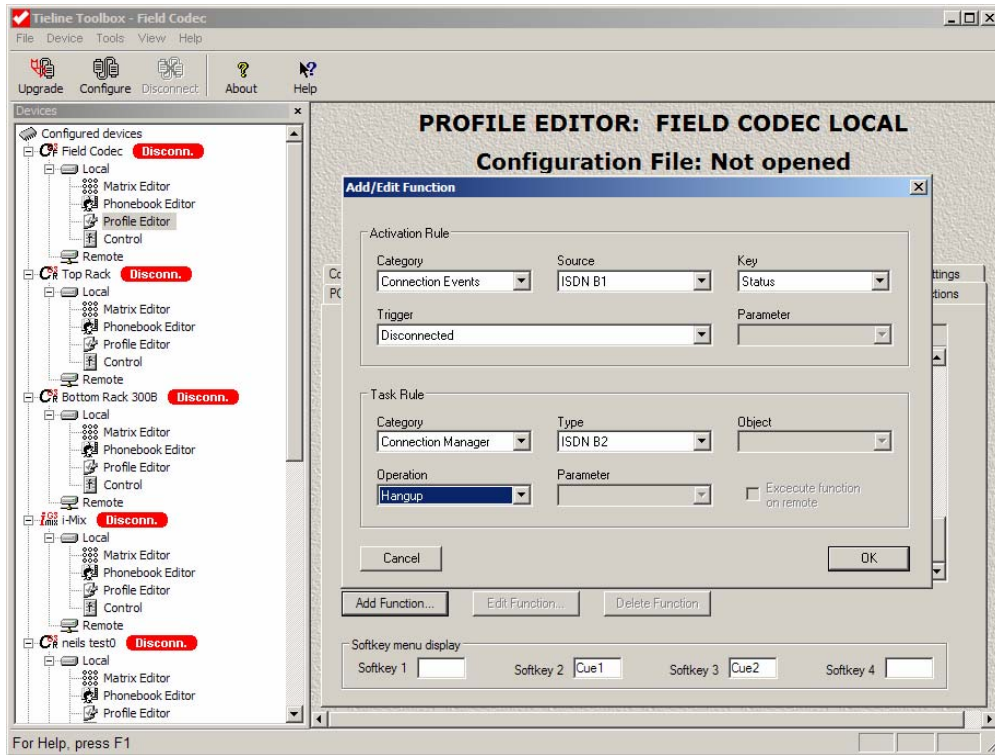
How to insert the fail-over Telephone number and profile into the Phonebook

- Launch Tieline Toolbox
- Create a Device for your Codec
- Connect to the Codec
- Select 'Phonebook Editor' from the available editors list beneath your connected device
- In the Phonebook Editor Window click in the next available 'Name' field
 - Enter an informative description for your connection
 - Tab across to the 'Number' field and enter the number – IP, ISDN, POTS etc
 - If a different Profile is required, tab across to the 'Profile' field
 - A pull-down tab should appear
 - Click on this and select the required profile
 - Click on the 'Set Ph Book' button
- Create any other required Phonebook entries repeating the above procedure



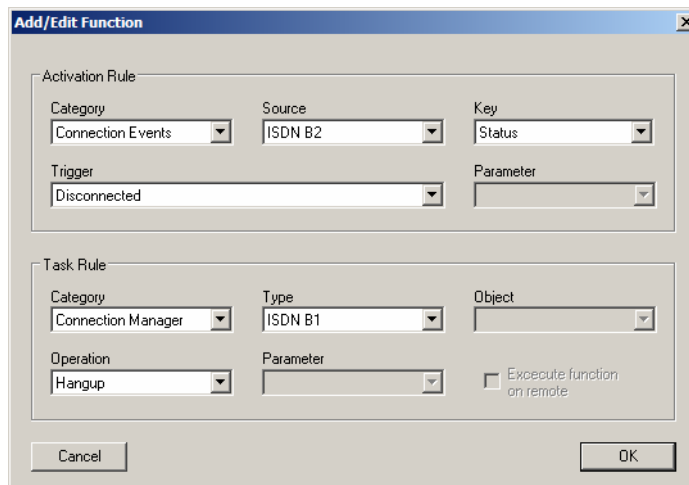
Set up the following Functions using Tieline Toolbox Function Manager

- Select 'Profile Editor' from the available editors list beneath your connected device
- In the Profile Editor Window click on the 'Functions' tab
 - Click on the 'Add Function...' button to reveal the 'Add/Edit Function' window
 - Setup the first function as displayed below by clicking on the pull-down arrows to reveal the options and then click on the required option to select it
 - Press the 'OK' button when all details are correct



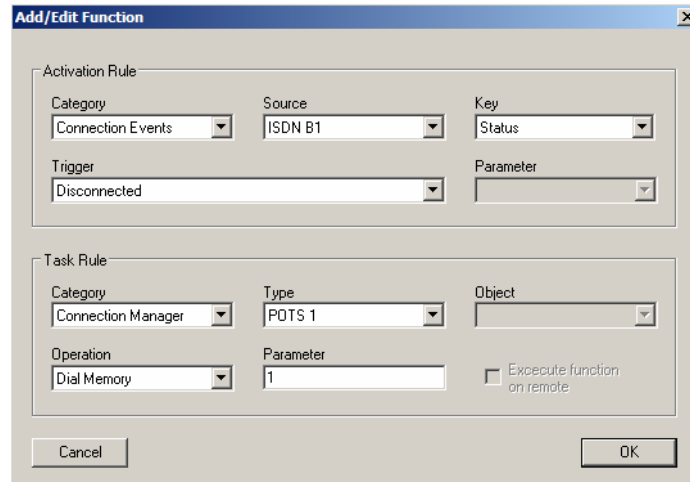
In the event only one B Channel disconnects (in this case B1) this function disconnects B2

- Click on the 'Add Function...' button again to reveal another 'Add/Edit Function' window and repeat the above procedure using the below details



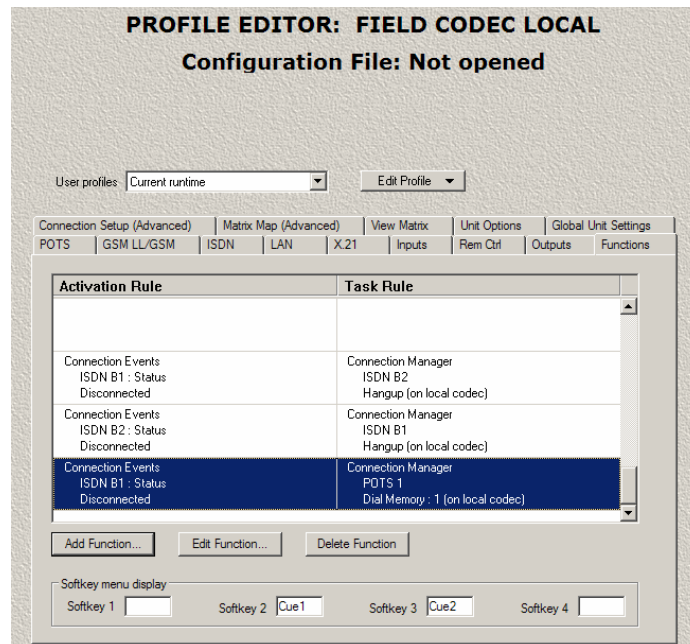
This function disconnects B1 in the event B2 disconnects (the reciprocal of the above)

- Create a third function by repeating the above procedure using the below details



This function sets up the new connection using the details previously entered in the 'Phonebook Editor' memory location #1

The Profile Editor - Functions window should now look like this



Transfer these functions to the Codec

- Click on 'File' on the menu bar
- From the pull down menu select 'Set Config on Codec'

Save the configuration

- The profile can be saved to a configuration file for safe keeping and easy retrieval
 - Click on 'File' on the menu bar
 - From the pull down menu select 'Save Config'
 - Provide a file name and directory to save your profile to

