

Connecting Your Codec to a PC

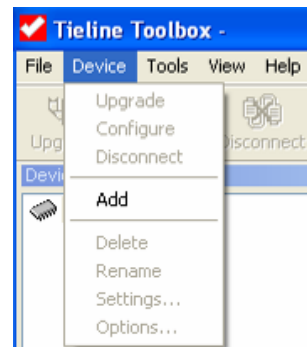
A Tieline codec serial port connects to any COM port on the PC using a standard modem cable. If you don't have a serial port on your PC, you can use a USB to serial port adapter cable to connect.

In addition, it is also possible to connect between a USB port on a PC and the USB port on the rear of your codec. Please see the Connecting via USB section of this manual for more details.

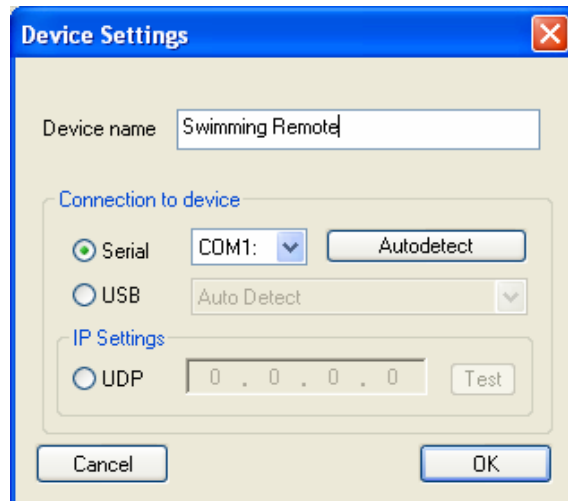
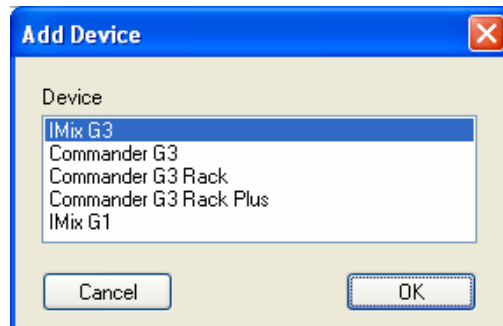
Configuring ToolBox and Your Codec to Work Together

Before you can communicate between your codec and your PC successfully, you must ensure that both your codec and your ToolBox software are configured correctly. The COM port is set up by ToolBox. When you first connect to the codec, in order to operate ToolBox effectively you will first need to add the codec to your Devices menu tree. The steps to configure ToolBox successfully are shown below. Please Note: ToolBox will automatically connect to a PC at the highest bit rate possible.

1. Open ToolBox and click on the Device drop-down menu.
2. Click on Add which will open the Add Device menu.



3. add and then click OK Click on the device you wish to which will open the Device Settings menu.
4. Name the device in the Device name section of the menu, in this example we will call it Swimming Remote.
5. Select the relevant connection from either Serial, IP or USB.
6. If you are connecting via the serial port, select the COM port that you are connected to (if you are unsure click on Autodetect and your ToolBox software will detect this automatically for you).
7. Please note that if you are connecting via a USB connection you will also need to ensure the correct drivers for USB connection are installed on your PC. If you do not have these drivers please contact us at support@tieline.com
8. Press OK and your device will be added to the Configured devices root menu as shown. Once you have added your codec to this list, it becomes a local codec. Various codec function menus can be accessed by clicking on the options for the



Matrix Editor, Profile Editor, Phonebook Editor and Control menu. The remote codec's function menus can also be accessed by clicking on Remote in this menu screen once you are connected to it.